

General Information

Gene Name Synonym

Latency-associated peptide

Protein Construction

A DNA sequence encoding the active form of human/rhesus/canine TGFβ1 (NP_000651.3) (Ala 279-Ser 390) was expressed and purified. Human, Rhesus and Canine TGFβ1 sequences are identical.

Organism

Human

Expression Host

CHO Stable Cells

QC Testing

Activity

Measured by its ability to inhibit cell proliferation of Mv-1-lu mink lung epithelial cells.
The ED₅₀ for this effect is typically 0.04-0.2 ng/mL.

Purity

> 95 % as determined by HPLC.

Endotoxin

< 1.0 EU per µg of the protein as determined by the LAL method

Stability

Samples are stable for up to twelve months from date of receipt at -70°C

Predicted N terminal

Ala 279

Molecular Mass

The recombinant human/rhesus/canine TGFβ1 consists of 112 amino acids and has a calculated molecular mass of 12.8 kDa. It migrates as an approximately 13 & 26 kDa band in reduced and non-reduced SDS-PAGE respectively, corresponding to the monomer and homodimer.

Formulation

Lyophilized from sterile 100mM GYL, 10mM NaCl, pH 3.0

1. 5 % trehalose and mannitol are added as protectants before lyophilization.

2. Please contact us for any concerns or special requirements.

Usage Guide

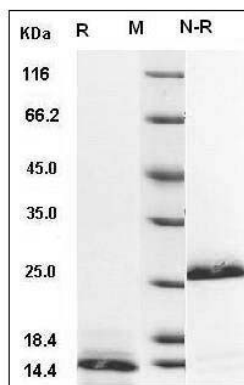
Storage

Store it under sterile conditions at -20°C to -80°C. It is recommended that the protein be aliquoted for optimal storage. Avoid repeated freeze-thaw cycles.

Reconstitution

Adding sterile water, prepare a stock solution of 0.25 mg/ml. Concentration is measured by UV-Vis.

SDS-PAGE



Human / Rhesus / Canine TGF-beta 1 / TGFB1
Protein SDS-PAGE