

Human UBE2F (His Tag) recombinant protein



Catalog Number: 500538

General Information

Gene Name Synonym

NEDD8 carrier protein UBE2F; NEDD8 protein ligase UBE2F; NEDD8-conjugating enzyme 2; Ubiquitin-conjugating enzyme E2 F

Protein Construction

A DNA sequence encoding the human UBE2F isoform 1 (Q969M7-1) (Met 1-Arg 185) was expressed, with a polyhistidine tag at the N-terminus.

Organism

Human

Expression Host

E. coli

QC Testing

Purity

> 94 % as determined by SDS-PAGE

Endotoxin

Please contact us for more information.

Stability

Samples are stable for up to twelve months from date of receipt at -70°C

Predicted N terminal

Met

Molecular Mass

The recombinant human UBE2F consisting of 201 amino acids and has a calculated molecular mass of 22.9 kDa. It migrates as a 25 kDa band in SDS-PAGE under reducing conditions.

Formulation

Lyophilized from sterile PBS, 10% glycerol, 2mM DTT, pH 7.5

1. 5 % trehalose and mannitol are added as protectants before lyophilization.

2. Please contact us for any concerns or special requirements.

Usage Guide

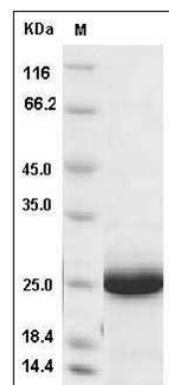
Storage

Store it under sterile conditions at -20°C to -80°C. It is recommended that the protein be aliquoted for optimal storage. Avoid repeated freeze-thaw cycles.

Reconstitution

Adding sterile water, prepare a stock solution of 0.25 mg/ml. Concentration is measured by UV-Vis.

SDS-PAGE



Human UBE2F Protein (His Tag) SDS-PAGE