

Human Cathepsin D/CTSD (His Tag) recombinant protein



Catalog Number: 500474

General Information

Gene Name Synonym

Cathepsin D light chain; Cathepsin D heavy chain

Protein Construction

A DNA sequence encoding the pro form of human CTSD (P07339) (Met 1-Leu 412) was fused with a polyhistidine tag at the C-terminus.

Organism

Human

Expression Host

Human Cells

QC Testing

Activity

Measured by its ability to bind biotinylated human CTSS-His (Cat:501120) in a functional ELISA.

Purity

> 97 % as determined by SDS-PAGE

Endotoxin

< 1.0 EU per μ g of the protein as determined by the LAL method

Stability

Samples are stable for up to twelve months from date of receipt at -70°C

Predicted N terminal

Ser 19

Molecular Mass

The secreted recombinant human CTSD (pro form) consists of 405 amino acids and has a predicted molecular mass of 44 kDa. As a result of different glycosylation, the apparent molecular mass of rhCTSD is approximately 40-110 kDa in SDS-PAGE under reducing conditions.

Formulation

Lyophilized from sterile 25mM MES, 150mM NaCl, pH 6.5

1. 5 % trehalose and mannitol are added as protectants before lyophilization.

2. Please contact us for any concerns or special requirements.

Usage Guide

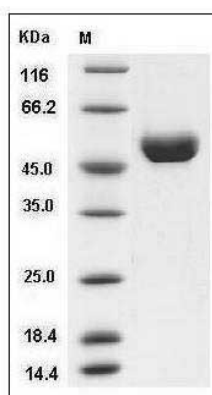
Storage

Store it under sterile conditions at -20°C to -80°C. It is recommended that the protein be aliquoted for optimal storage. Avoid repeated freeze-thaw cycles.

Reconstitution

Adding sterile water, prepare a stock solution of 0.25 mg/ml. Concentration is measured by UV-Vis.

SDS-PAGE



Human Cathepsin D / CTSD Protein (His Tag)
SDS-PAGE