

Human KREMEN1/KRM1 (His Tag) recombinant protein



Catalog Number: 500455

General Information

Gene Name Synonym

Dickkopf receptor; Kringle domain-containing transmembrane protein 1; Kringle-containing protein marking the eye and the nose

Protein Construction

A DNA sequence encoding the human KREMEN1 (NP_114434.3) (Met1-Thr394) was expressed with a polyhistidine tag at the C-terminus.

Organism

Human

Expression Host

Human Cells

QC Testing

Purity

> 95 % as determined by SDS-PAGE

Endotoxin

< 1.0 EU per μ g of the protein as determined by the LAL method

Stability

Samples are stable for up to twelve months from date of receipt at -70°C

Predicted N terminal

Ala 20

Molecular Mass

The recombinant human KREMEN1 consists of 386 amino acids and predicts a molecular mass of 42.6 KDa. It migrates as an approximately 56.3 KDa band in SDS-PAGE under reducing conditions.

Formulation

Lyophilized from sterile PBS, pH 7.4.

1. 5 % trehalose and mannitol are added as protectants before lyophilization.

2. Please contact us for any concerns or special requirements.

Usage Guide

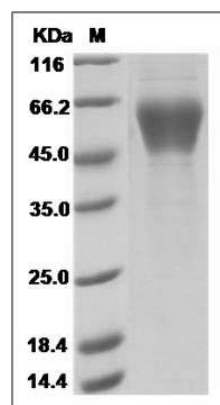
Storage

Store it under sterile conditions at -20°C to -80°C. It is recommended that the protein be aliquoted for optimal storage. Avoid repeated freeze-thaw cycles.

Reconstitution

Adding sterile water, prepare a stock solution of 0.25 mg/ml. Concentration is measured by UV-Vis.

SDS-PAGE



Human KREMEN1 Protein (His Tag) SDS-PAGE