

# Human UBE2I recombinant protein



Catalog Number: 500453

## General Information

### Gene Name Synonym

SUMO-protein ligase; Ubiquitin carrier protein 9; Ubiquitin carrier protein I; Ubiquitin-conjugating enzyme E2 I; Ubiquitin-protein ligase I; p18

### Protein Construction

A DNA sequence encoding the human UBE2I (P63279) (Met 1-Ser 158) was expressed and purified, with additional two amino acids (Gly & Pro) at the N-terminus.

### Organism

Human

### Expression Host

E. coli

## QC Testing

### Purity

> 90 % as determined by SDS-PAGE

### Endotoxin

Please contact us for more information.

### Stability

Samples are stable for up to twelve months from date of receipt at -70°C

### Predicted N terminal

Gly

### Molecular Mass

The recombinant human UBE2I consists of 160 amino acids and migrates as an approximately 18 kDa band in SDS-PAGE under reducing conditions as predicted.

### Formulation

Lyophilized from sterile PBS, 10% glycerol, 2mM DTT, pH 7.4

1. 5 % trehalose and mannitol are added as protectants before lyophilization.
2. Please contact us for any concerns or special requirements.

## Usage Guide

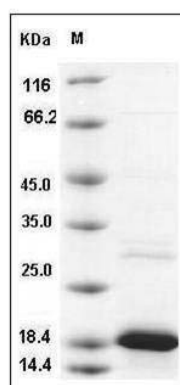
### Storage

Store it under sterile conditions at -20°C to -80°C. It is recommended that the protein be aliquoted for optimal storage. Avoid repeated freeze-thaw cycles.

### Reconstitution

Adding sterile water, prepare a stock solution of 0.25 mg/ml. Concentration is measured by UV-Vis.

### SDS-PAGE



Human UBE2I Protein SDS-PAGE