

Human BCAM / CD239 (Fc Tag) recombinant protein



Catalog Number: 500451

General Information

Gene Name Synonym

Auberger B antigen; B-CAM cell surface glycoprotein; F8/G253 antigen; Lutheran antigen; Lutheran blood group glycoprotein

Protein Construction

A DNA sequence encoding the extracellular domain of human BCAM (NP_005572.2) (Met 1-Ala 547) was fused with the Fc region of human IgG1 at the C-terminus.

Organism

Human

Expression Host

Human Cells

QC Testing

Purity

> 95 % as determined by SDS-PAGE

Endotoxin

< 1.0 EU per μg of the protein as determined by the LAL method

Stability

Samples are stable for up to twelve months from date of receipt at -70°C

Predicted N terminal

Glu 32

Molecular Mass

The recombinant human BCAM/Fc is a disulfide-linked homodimeric protein. The reduced monomer consists of 754 amino acids and predicts a molecular mass of 83 kDa. As a result of glycosylation, the rh BCAM/Fc monomer migrates as approximately 100-110 kDa band in SDS-PAGE under reducing conditions.

Formulation

Lyophilized from sterile PBS, pH 7.4

1. 5 % trehalose and mannitol are added as protectants before lyophilization.

2. Please contact us for any concerns or special requirements.

Usage Guide

Storage

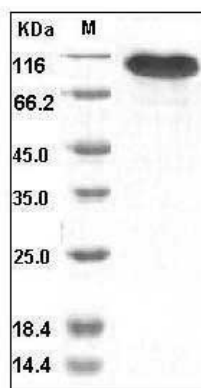
Store it under sterile conditions at -20°C to -80°C .

It is recommended that the protein be aliquoted for optimal storage. Avoid repeated freeze-thaw cycles.

Reconstitution

Adding sterile water, prepare a stock solution of 0.25 mg/ml. Concentration is measured by UV-Vis.

SDS-PAGE



Human BCAM Protein (Fc Tag) SDS-PAGE