

Human LRP10 (Fc Tag) recombinant protein



Catalog Number: 500450

General Information

Protein Construction

A DNA sequence encoding the human LRP10 (Q7Z4F1-1) extracellular domain (Met 1-Lys 440) was fused with the Fc region of human IgG1 at the C-terminus.

Organism

Human

Expression Host

Human Cells

QC Testing

Purity

> 88 % as determined by SDS-PAGE

Endotoxin

< 1.0 EU per μ g of the protein as determined by the LAL method

Stability

Samples are stable for up to twelve months from date of receipt at -70°C

Predicted N terminal

His 17

Molecular Mass

The secreted recombinant human LRP10/Fc is a disulfide-linked homodimeric protein. The reduced monomer consists of 665 amino acids and has a

predicted molecular mass of 73 kDa. The apparent molecular mass of rhLRP10/Fc monomer is approximately 80-90 kDa in SDS-PAGE under reducing conditions due to glycosylation.

Formulation

Lyophilized from sterile PBS, pH 7.4

1. 5 % trehalose and mannitol are added as protectants before lyophilization.

2. Please contact us for any concerns or special requirements.

Usage Guide

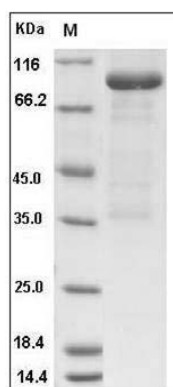
Storage

Store it under sterile conditions at -20°C to -80°C. It is recommended that the protein be aliquoted for optimal storage. Avoid repeated freeze-thaw cycles.

Reconstitution

Adding sterile water, prepare a stock solution of 0.25 mg/ml. Concentration is measured by UV-Vis.

SDS-PAGE



Human LRP10 Protein (Fc Tag) SDS-PAGE