

# Sus scrofa (Pig) IL-1 beta (Pig) recombinant protein



Catalog Number: 500445

## General Information

### Protein Construction

A DNA sequence encoding the sus scrofa IL1B (NP\_999220.1) (Ala115-Pro267) was expressed with an initial Met.

### Organism

Sus scrofa (Pig)

### Expression Host

E. coli

## QC Testing

### Activity

Measured in a cell proliferation assay using D10.G4.1 mouse helper T cells. Symons,J.A. et al. (1987) in Lymphokines and Interferons, a Practical Approach. Clemens,M.J. et al. (eds): IRL Press. 272.

The ED<sub>50</sub> for this effect is typically 0.08-0.4 ng/mL.

### Purity

> 90 % as determined by SDS-PAGE.

### Endotoxin

Please contact us for more information.

### Stability

Samples are stable for up to twelve months from date of receipt at -70°C

### Predicted N terminal

Met

## Molecular Mass

The recombinant sus scrofa IL1B consists 154 amino acids and predicts a molecular mass of 17.7 kDa.

### Formulation

Lyophilized from sterile PBS, pH 7.4.

1. 5 % trehalose and mannitol are added as protectants before lyophilization.
2. Please contact us for any concerns or special requirements.

## Usage Guide

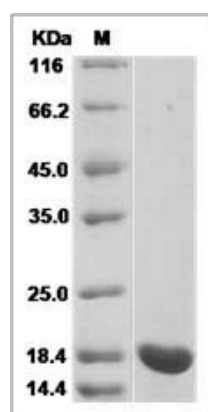
### Storage

Store it under sterile conditions at -20°C to -80°C. It is recommended that the protein be aliquoted for optimal storage. Avoid repeated freeze-thaw cycles.

### Reconstitution

Adding sterile water, prepare a stock solution of 0.25 mg/ml. Concentration is measured by UV-Vis.

## SDS-PAGE



IL1B protein SDS-PAGE