

Human CCL22/MDC (His Tag) recombinant protein



Catalog Number: 500416

General Information

Gene Name Synonym

CC chemokine STCP-1; MDC(1-69); Macrophage-derived chemokine; Small-inducible cytokine A22; Stimulated T-cell chemotactic protein 1; MDC(3-69); MDC(5-69); MDC(7-69)

Protein Construction

A DNA sequence encoding the secreted form of human CCL22 (O00626) (Gly 25-Gln 93) was expressed, with a polyhistidine tag at the N-terminus.

Organism

Human

Expression Host

E. coli

QC Testing

Purity

> 90 % as determined by SDS-PAGE

Endotoxin

Please contact us for more information.

Stability

Samples are stable for up to twelve months from date of receipt at -70°C

Predicted N terminal

Met

Molecular Mass

The recombinant human CCL22 consisting of 84 amino acids and has a calculated molecular mass of 9.7 KDa. It migrates as an 10 kDa band in SDS-PAGE under reducing conditions.

Formulation

Lyophilized from sterile 30% Acetonitrile, 0.1% TFA

1. 5 % trehalose and mannitol are added as protectants before lyophilization.
2. Please contact us for any concerns or special requirements.

Usage Guide

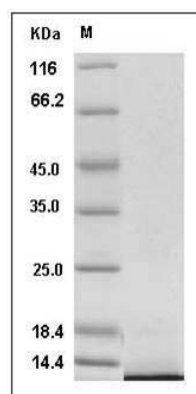
Storage

Store it under sterile conditions at -20°C to -80°C. It is recommended that the protein be aliquoted for optimal storage. Avoid repeated freeze-thaw cycles.

Reconstitution

Adding sterile water, prepare a stock solution of 0.25 mg/ml. Concentration is measured by UV-Vis.

SDS-PAGE



Human CCL22 / MDC Protein (His Tag) SDS-PAGE