

# Human PAI-1 / SerpinE1 (His Tag) recombinant protein



Catalog Number: 500407

## General Information

### Protein Construction

A DNA sequence encoding the human SerpinE1 precursor (NP\_000593.1) (Met 1-Pro 402) was expressed with a C-terminal polyhistidine tag.

### Organism

Human

### Expression Host

Human Cells

## QC Testing

### Activity

Measured by its ability to inhibit uPA cleavage of a peptide substrate, N-carbobenzyloxy-Gly-Gly-Arg-7-amido-4-methylcoumarin (Z-GGR-AMC). The IC<sub>50</sub> value is < 60 nM.

### Purity

> 97 % as determined by SDS-PAGE

### Endotoxin

< 1.0 EU per µg of the protein as determined by the LAL method

### Stability

Samples are stable for up to twelve months from date of receipt at -70°C

### Predicted N terminal

Val 24

### Molecular Mass

The mature recombinant human SerpinE1 consists of 390 amino acids and predicts a molecular mass of 44.2 kDa. In SDS-PAGE under reducing conditions, the apparent molecular mass of rhSerpinE1 is approximately 45 kDa.

### Formulation

Lyophilized from sterile 50mM NaAc, 0.1M NaCl, pH 5.5

1. 5 % trehalose and mannitol are added as protectants before lyophilization.

2. Please contact us for any concerns or special requirements.

## Usage Guide

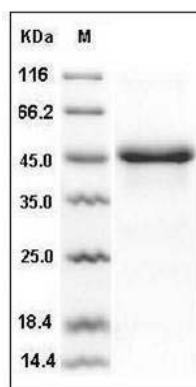
### Storage

Store it under sterile conditions at -20°C to -80°C. It is recommended that the protein be aliquoted for optimal storage. Avoid repeated freeze-thaw cycles.

### Reconstitution

Adding sterile water, prepare a stock solution of 0.25 mg/ml. Concentration is measured by UV-Vis.

### SDS-PAGE



Human SerpinE1 / PAI-1 Protein (His Tag) SDS-PAGE