

Human CFBF / CBF-beta (His Tag) recombinant protein



Catalog Number: 500363

General Information

Gene Name Synonym

Polyomavirus enhancer-binding protein 2 beta subunit; SL3-3 enhancer factor 1 subunit beta; SL3/AKV core-binding factor beta subunit

Protein Construction

A DNA sequence encoding the mature form of human CFBF (Q13951-1) (Met1-Pro182) was expressed with a polyhistidine tag at the N-terminus.

Organism

Human

Expression Host

E. coli

QC Testing

Purity

> 85 % as determined by SDS-PAGE

Endotoxin

Please contact us for more information.

Stability

Samples are stable for up to twelve months from date of receipt at -70°C

Predicted N terminal

His

Molecular Mass

The recombinant human CFBF consists of 197 amino acids and predicts a molecular mass of 23.3 KDa. It migrates as an approximately 27 KDa band in SDS-PAGE under reducing conditions.

Formulation

Lyophilized from sterile PBS, pH 7.4.

1. 5 % trehalose and mannitol are added as protectants before lyophilization.
2. Please contact us for any concerns or special requirements.

Usage Guide

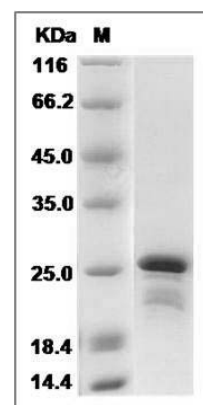
Storage

Store it under sterile conditions at -20°C to -80°C. It is recommended that the protein be aliquoted for optimal storage. Avoid repeated freeze-thaw cycles.

Reconstitution

Adding sterile water, prepare a stock solution of 0.25 mg/ml. Concentration is measured by UV-Vis.

SDS-PAGE



Human CFBF / CBF-beta Protein (His Tag) SDS-PAGE