

General Information

Gene Name Synonym

Protein K-12

Protein Construction

A DNA sequence encoding the human SECTM1 (Q8WVN6-1) extracellular domain (Met 1-Gly 145) was fused with a polyhistidine tag at the C-terminus

Organism

Human

Expression Host

Human Cells

QC Testing

Purity

> 97 % as determined by SDS-PAGE

Endotoxin

< 1.0 EU per μg of the protein as determined by the LAL method

Stability

Samples are stable for up to twelve months from date of receipt at -70°C

Predicted N terminal

Gln 29

Molecular Mass

The recombinant human SECTM1 consists of 128

amino acids and has a predicted molecular mass of 14 kDa. As a result of glycosylation, the apparent molecular mass of rhSECTM1 is approximately 23 kDa in SDS-PAGE under reducing conditions

Formulation

Lyophilized from sterile PBS, pH 7.4

1. 5 % trehalose and mannitol are added as protectants before lyophilization.

2. Please contact us for any concerns or special requirements.

Usage Guide

Storage

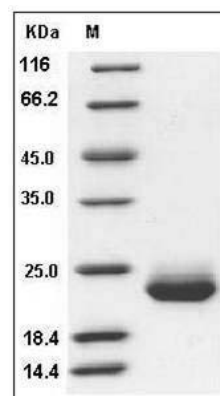
Store it under sterile conditions at -20°C to -80°C .

It is recommended that the protein be aliquoted for optimal storage. Avoid repeated freeze-thaw cycles.

Reconstitution

Adding sterile water, prepare a stock solution of 0.25 mg/ml. Concentration is measured by UV-Vis.

SDS-PAGE



Human SECTM1 / K12 Protein (His Tag) SDS-PAGE