

# Human CPLX3 / Complexin 3 (His Tag) recombinant protein



Catalog Number: 500348

## General Information

### Gene Name Synonym

Complexin III

### Protein Construction

A DNA sequence encoding the human CPLX3 (Q8WVH0) (Met1-Lys154) was expressed with an N-terminal polyhistidine tag.

### Organism

Human

### Expression Host

Human Cells

## QC Testing

### Purity

> 95 % as determined by SDS-PAGE

### Endotoxin

< 1.0 EU per µg of the protein as determined by the LAL method

### Stability

Samples are stable for up to twelve months from date of receipt at -70°C

### Predicted N terminal

His

### Molecular Mass

The recombinant human CPLX3 comprises 174

amino acids and has a predicted molecular mass of 19.5 kDa. The apparent molecular mass of the protein is approximately 29-32 kDa in SDS-PAGE under reducing conditions.

### Formulation

Lyophilized from sterile PBS, pH 7.4.

1. 5 % trehalose and mannitol are added as protectants before lyophilization.

2. Please contact us for any concerns or special requirements.

## Usage Guide

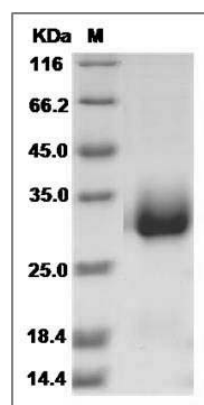
### Storage

Store it under sterile conditions at -20°C to -80°C. It is recommended that the protein be aliquoted for optimal storage. Avoid repeated freeze-thaw cycles.

### Reconstitution

Adding sterile water, prepare a stock solution of 0.25 mg/ml. Concentration is measured by UV-Vis.

### SDS-PAGE



Human CPLX3 / Complexin 3 Protein (His Tag)  
SDS-PAGE