

# Human Chitotriosidase/Chitinase 1/CHIT1 (His Tag) recombinant protein



Catalog Number: 500335

## General Information

### Gene Name Synonym

Chitinase-1

### Protein Construction

A DNA sequence encoding the human CHIT1 (NP\_003456.1) (Met 1-Asn 466) precursor was fused with a polyhistidine tag at the C-terminus.

### Organism

Human

### Expression Host

Human Cells

## QC Testing

### Purity

> 94 % as determined by SDS-PAGE

### Endotoxin

< 1.0 EU per µg of the protein as determined by the LAL method

### Stability

Samples are stable for up to twelve months from date of receipt at -70°C

### Predicted N terminal

Ala 22

### Molecular Mass

The recombinant human CHIT1 consists of 456 amino acids after removal of the signal peptide

and has a predicted molecular mass of 50.8 kDa. In SDS-PAGE under reducing conditions, the apparent molecular mass of rh CHIT1 is approximately 48 kDa.

### Formulation

Lyophilized from sterile 12.5mM Tris, 75mM NaCl, 50% glycerol, pH 7.5

1. 5 % trehalose and mannitol are added as protectants before lyophilization.
2. Please contact us for any concerns or special requirements.

## Usage Guide

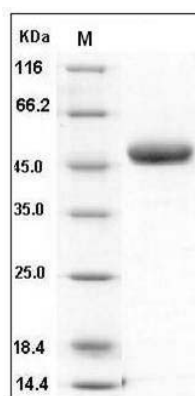
### Storage

Store it under sterile conditions at -20°C to -80°C. It is recommended that the protein be aliquoted for optimal storage. Avoid repeated freeze-thaw cycles.

### Reconstitution

Adding sterile water, prepare a stock solution of 0.25 mg/ml. Concentration is measured by UV-Vis.

### SDS-PAGE



Human Chitotriosidase / Chitinase 1 / CHIT1 Protein (His Tag) SDS-PAGE