

# Human LMAN2 (His Tag) recombinant protein



Catalog Number: 500323

## General Information

### Gene Name Synonym

Glycoprotein GP36b; Lectin mannose-binding 2; Vesicular integral-membrane protein 36

### Protein Construction

A DNA sequence encoding the human LMAN2 extracellular domain (Q12907) (As p45-Arg 322) was fused with a polyhistidine tag at the C-terminus and an initial Met at the N-terminus.

### Organism

Human

### Expression Host

E. coli

## QC Testing

### Purity

> 95 % as determined by SDS-PAGE

### Endotoxin

Please contact us for more information.

### Stability

Samples are stable for up to twelve months from date of receipt at -70°C

### Predicted N terminal

Met

### Molecular Mass

The recombinant human LMAN2 consisting of 289 amino acids and has a calculated molecular mass of 33.2 kDa. It migrates as an approximately 30 kDa band in SDS-PAGE under reducing conditions.

### Formulation

Lyophilized from sterile 50mM Tris, pH 8.5

1. 5 % trehalose and mannitol are added as protectants before lyophilization.

2. Please contact us for any concerns or special requirements.

## Usage Guide

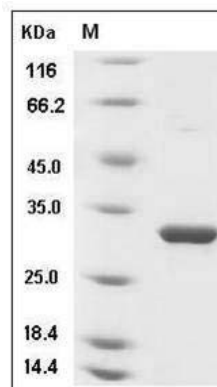
### Storage

Store it under sterile conditions at -20°C to -80°C. It is recommended that the protein be aliquoted for optimal storage. Avoid repeated freeze-thaw cycles.

### Reconstitution

Adding sterile water, prepare a stock solution of 0.25 mg/ml. Concentration is measured by UV-Vis.

### SDS-PAGE



Human LMAN2 / VIP36 Protein (His Tag) SDS-PAGE