

# Human Copine I / CPN1 (SUMO Tag) recombinant protein



Catalog Number: 500318

## General Information

### Gene Name Synonym

Copine I

### Protein Construction

A DNA sequence encoding the human CPNE1 (Q99829) (Met1-Ala537) was fused with the SUMO tag at the N-terminus.

### Organism

Human

### Expression Host

Baculovirus-Insect Cells

## QC Testing

### Purity

> 95 % as determined by SDS-PAGE

### Endotoxin

< 1.0 EU per  $\mu$ g of the protein as determined by the LAL method

### Stability

Samples are stable for up to twelve months from date of receipt at -70°C

### Predicted N terminal

Met

### Molecular Mass

The secreted recombinant human CPNE1 consists

of 656 amino acids and predicts a molecular mass of 72.7 KDa. The apparent molecular mass of the protein is approximately 73 KDa in SDS-PAGE under reducing conditions due to glycosylation.

### Formulation

Lyophilized from sterile 20mM Tris, 500mM NaCl, pH 7.0, 10% gly

1. 5 % trehalose and mannitol are added as protectants before lyophilization.
2. Please contact us for any concerns or special requirements.

## Usage Guide

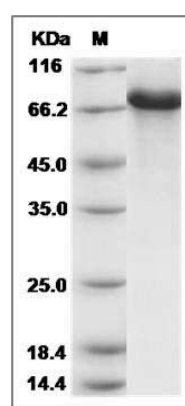
### Storage

Store it under sterile conditions at -20°C to -80°C. It is recommended that the protein be aliquoted for optimal storage. Avoid repeated freeze-thaw cycles.

### Reconstitution

Adding sterile water, prepare a stock solution of 0.25 mg/ml. Concentration is measured by UV-Vis.

### SDS-PAGE



Human CPNE1 / Copine I / CPN1 Protein (SUMO Tag) SDS-PAGE