

General Information

Protein Construction

A DNA sequence encoding the Simian immunodeficiency virus (SIV)(isolate SIVmac251v31523ru28) envelope glycoprotein gp160 Protein(gp120 subunit) (ADH04463.1) (Glu1-Arg461) was expressed with a polyhistidine tag at the C-terminus.

Organism

SIV

Expression Host

Human Cells

QC Testing

Purity

> 95 % as determined by SDS-PAGE.

Endotoxin

< 1.0 EU per µg protein as determined by the LAL method.

Stability

Samples are stable for up to twelve months from date of receipt at -70°C

Predicted N terminal

Glu

Molecular Mass

The recombinant (SIV)(isolate SIVmac251v31523ru28) envelope glycoprotein

gp160 Protein(gp120 subunit) consists 472 amino acids and predicts a molecular mass of 54.6 kDa.

Formulation

Lyophilized from sterile PBS, pH 7.4.

1. 5 % trehalose and mannitol are added as protectants before lyophilization.

2. Please contact us for any concerns or special requirements.

Usage Guide

Storage

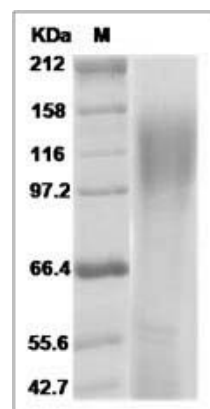
Store it under sterile conditions at -20°C to -80°C.

It is recommended that the protein be aliquoted for optimal storage. Avoid repeated freeze-thaw cycles.

Reconstitution

Adding sterile water, prepare a stock solution of 0.25 mg/ml. Concentration is measured by UV-Vis.

SDS-PAGE



Simian immunodeficiency virus (SIV) (isolate SIVmac251v31523ru28) envelope glycoprotein gp120 Protein (His Tag)