

# Mouse CLEC4F / CLECSF13 (Fc Tag) recombinant protein



Catalog Number: 500306

## General Information

### Gene Name Synonym

C-type lectin superfamily member 13; Kupffer cell receptor

### Protein Construction

A DNA sequence encoding the mouse Clec4f (NP\_058031.2) (Arg70-Gly548) was expressed with the Fc region of human IgG1 at the N-terminus.

### Organism

Mouse

### Expression Host

Human Cells

## QC Testing

### Purity

> 85 % as determined by SDS-PAGE.

### Endotoxin

<1.0 EU per  $\mu\text{g}$  protein as determined by the LAL method.

### Stability

Samples are stable for up to twelve months from date of receipt at  $-70^{\circ}\text{C}$

### Predicted N terminal

Glu

## Molecular Mass

The recombinant mouse Clec4f consists 739 amino acids and predicts a molecular mass of 82.1 kDa.

## Formulation

Lyophilized from sterile PBS, pH 7.4.

1. 5 % trehalose and mannitol are added as protectants before lyophilization.

2. Please contact us for any concerns or special requirements.

## Usage Guide

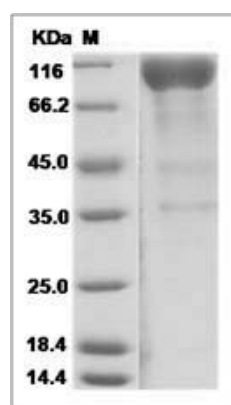
### Storage

Store it under sterile conditions at  $-20^{\circ}\text{C}$  to  $-80^{\circ}\text{C}$ . It is recommended that the protein be aliquoted for optimal storage. Avoid repeated freeze-thaw cycles.

### Reconstitution

Adding sterile water, prepare a stock solution of 0.25 mg/ml. Concentration is measured by UV-Vis.

## SDS-PAGE



Clec4f protein SDS-PAGE