

Human KLK13/Kallikrein 13 (His Tag) recombinant protein



Catalog Number: 500305

General Information

Gene Name Synonym

Kallikrein-like protein 4

Protein Construction

A DNA sequence encoding the pro-form of human KLK13 (NP_056411.1) (Met 1-Ile 262) was expressed with a C-terminal polyhistidine tag.

Organism

Human

Expression Host

Human Cells

QC Testing

Activity

Measured by its ability to cleave the fluorogenic peptide substrate Boc-VPR-AMC (R&D Systems, Catalog # ES011). The specific activity is >200 pmoles/min/ μ g.

Purity

> 95 % as determined by SDS-PAGE

Endotoxin

< 1.0 EU per μ g of the protein as determined by the LAL method

Stability

Samples are stable for up to twelve months from date of receipt at -70°C

Predicted N terminal

Gly 18

Molecular Mass

The recombinant human KLK13 consists of 256 amino acids and has a predicted molecular mass of 28.4 kDa. As a result of glycosylation, the apparent molecular mass of rh KLK13 is approximately 33-37 kDa in SDS-PAGE under reducing conditions.

Formulation

Lyophilized from sterile PBS, pH 7.4

1. 5 % trehalose and mannitol are added as protectants before lyophilization.
2. Please contact us for any concerns or special requirements.

Usage Guide

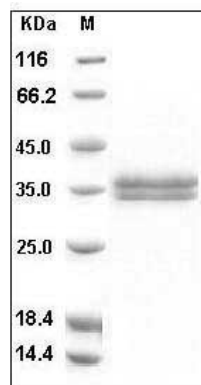
Storage

Store it under sterile conditions at -20°C to -80°C. It is recommended that the protein be aliquoted for optimal storage. Avoid repeated freeze-thaw cycles.

Reconstitution

Adding sterile water, prepare a stock solution of 0.25 mg/ml. Concentration is measured by UV-Vis.

SDS-PAGE



Human KLK13 / Kallikrein-13 Protein (His Tag)
SDS-PAGE