

## General Information

### Gene Name Synonym

Matrix metalloproteinase-8; PMNL collagenase

### Protein Construction

A DNA sequence encoding the pro form of human MMP8 (NP\_002415.1) (Phe 21-Gly 467) was expressed and purified, with an initial Met at the N-terminus.

### Organism

Human

### Expression Host

Human Cells

## QC Testing

### Activity

Measured by its ability to cleave the fluorogenic peptide substrate, Mca-PLGL-Dpa-AR-NH<sub>2</sub> (AnaSpec, Catalog # 27076). The specific activity is > 400 pmoles/min/μg.

### Purity

> 92 % as determined by SDS-PAGE

### Endotoxin

< 1.0 EU per μg of the protein as determined by the LAL method

### Stability

Samples are stable for up to twelve months from date of receipt at -70°C

### Predicted N terminal

Met

### Molecular Mass

The recombinant human MMP8 consisting of 448 amino acids and has a calculated molecular mass of 52 kDa. It migrates as an approximately 65 kDa band in SDS-PAGE under reducing conditions.

### Formulation

Lyophilized from sterile PBS, pH 7.4

1. 5 % trehalose and mannitol are added as protectants before lyophilization.

2. Please contact us for any concerns or special requirements.

## Usage Guide

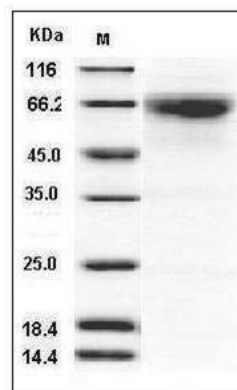
### Storage

Store it under sterile conditions at -20°C to -80°C. It is recommended that the protein be aliquoted for optimal storage. Avoid repeated freeze-thaw cycles.

### Reconstitution

Adding sterile water, prepare a stock solution of 0.25 mg/ml. Concentration is measured by UV-Vis.

### SDS-PAGE



Human MMP-8 / CLG1 Protein SDS-PAGE