

# Mouse CCL22/MDC (His Tag) recombinant protein



Catalog Number: 500281

## General Information

### Gene Name Synonym

Activated B and dendritic cell-derived; CC chemokine ABCD-1; Small-inducible cytokine A22

### Protein Construction

A DNA sequence encoding the mouse CCL22 (O88430) (Gly26-Ser92) was expressed with a polyhistidine tag at the N-terminus.

### Organism

Mouse

### Expression Host

E. coli

## QC Testing

### Purity

> 95 % as determined by SDS-PAGE

### Endotoxin

Please contact us for more information.

### Stability

Samples are stable for up to twelve months from date of receipt at -70°C

### Predicted N terminal

His

### Molecular Mass

The recombinant mouse CCL22 consists of 84 amino acids and predicts a molecular mass of 9.9 KDa.

### Formulation

Lyophilized from sterile 0.1 % TFA, 50 % acetonitrile.

1. 5 % trehalose and mannitol are added as protectants before lyophilization.

2. Please contact us for any concerns or special requirements.

## Usage Guide

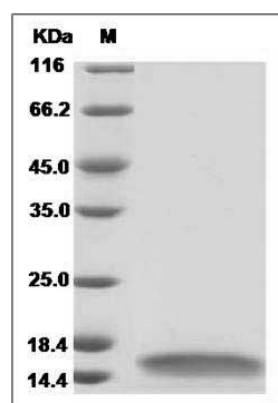
### Storage

Store it under sterile conditions at -20°C to -80°C. It is recommended that the protein be aliquoted for optimal storage. Avoid repeated freeze-thaw cycles.

### Reconstitution

Adding sterile water, prepare a stock solution of 0.25 mg/ml. Concentration is measured by UV-Vis.

### SDS-PAGE



Mouse CCL22 / MDC Protein (His Tag)