

# Human Lck (GST Tag) recombinant protein



Catalog Number: 500189

## General Information

### Gene Name Synonym

Leukocyte C-terminal Src kinase; Lymphocyte cell-specific protein-tyrosine kinase; Protein YT16; Proto-oncogene Lck; T cell-specific protein-tyrosine kinase; p56-LCK

### Protein Construction

A DNA sequence encoding the human LCK (NP\_001036236.1) (Met 1-Pro 509) was fused with the GST tag at the N-terminus.

### Organism

Human

### Expression Host

Baculovirus-Insect Cells

## QC Testing

### Activity

1. The specific activity was determined to be 70 nmol/min/mg using Poly(Glu,Tyr) 4:1 as substrate.
2. Measured by its ability to bind recombinant human CD3E in a functional ELISA.

### Purity

> 90 % as determined by SDS-PAGE

### Endotoxin

< 1.0 EU per µg of the protein as determined by the LAL method

### Stability

Samples are stable for up to twelve months from date of receipt at -70°C

### Predicted N terminal

Met

### Molecular Mass

The recombinant human LCK/GST chimera consists of 734 amino acids and predicts a molecular mass of 84.4 kDa. It migrates as an approximately 80 kDa band in SDS-PAGE under reducing conditions.

### Formulation

Supplied as sterile 50mM Tris, 100mM NaCl, pH 8.0, 0.5mM GSH, 0.1mM EGTA, 0.1mM EDTA, 0.5mM PMSF, 10% glycerol

1. 5 % trehalose and mannitol are added as protectants before lyophilization.
2. Please contact us for any concerns or special requirements.

## Usage Guide

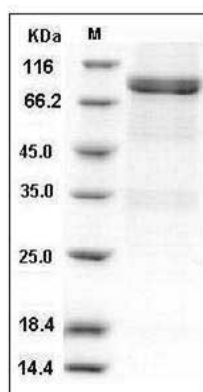
### Storage

Store it under sterile conditions at -20°C to -80°C. It is recommended that the protein be aliquoted for optimal storage. Avoid repeated freeze-thaw cycles.

### Reconstitution

Adding sterile water, prepare a stock solution of 0.25 mg/ml. Concentration is measured by UV-Vis.

### SDS-PAGE



Human Lck Kinase Protein (GST Tag) SDS-PAGE