

# Mouse ENPEP / Aminopeptidase A (His Tag) recombinant protein



Catalog Number: 500123

## General Information

### Gene Name Synonym

Aminopeptidase A; BP-1/6C3 antigen

### Protein Construction

A DNA sequence encoding the mature form of mouse ENPEP (P16406) (Arg41-Pro945) was expressed, with a polyhistidine tag at the N-terminus.

### Organism

Mouse

### Expression Host

Baculovirus-Insect Cells

## QC Testing

### Activity

Measured by its ability to cleave the fluorogenic peptide substrate, Glu-7-amido-4-methyl coumarin.

The specific activity is > 200 pmoles/min/μg.

### Purity

> 91 % as determined by SDS-PAGE

### Endotoxin

< 1.0 EU per μg of the protein as determined by the LAL method

### Stability

Samples are stable for up to twelve months from date of receipt at -70°C

### Predicted N terminal

His

## Molecular Mass

The recombinant mouse ENPEP consists of 921 amino acids and predicts a molecular mass of 106 KDa. It migrates as an approximately 113 KDa band in SDS-PAGE under reducing conditions.

## Formulation

Lyophilized from sterile 20mM Tris, 500mM NaCl, pH 7.4

1. 5 % trehalose and mannitol are added as protectants before lyophilization.

2. Please contact us for any concerns or special requirements.

## Usage Guide

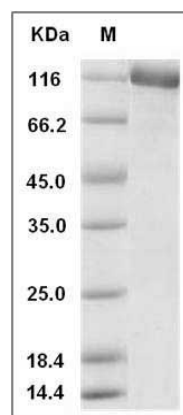
### Storage

Store it under sterile conditions at -20°C to -80°C. It is recommended that the protein be aliquoted for optimal storage. Avoid repeated freeze-thaw cycles.

## Reconstitution

Adding sterile water, prepare a stock solution of 0.25 mg/ml. Concentration is measured by UV-Vis.

## SDS-PAGE



Mouse ENPEP / Aminopeptidase A Protein (His Tag) SDS-PAGE