

# Human SH2D1A (His Tag) recombinant protein



Catalog Number: 500117

## General Information

### Gene Name Synonym

Duncan disease SH2-protein; Signaling lymphocytic activation molecule-associated protein; T-cell signal transduction molecule SAP

### Protein Construction

A DNA sequence encoding the human SH2D1A isoform 1 (NP\_002342.1) (Pro 2-Lys 97) was expressed, with a polyhistidine tag at the N-terminus.

### Organism

Human

### Expression Host

E. coli

## QC Testing

### Activity

1. Measured by its ability to bind recombinant human SLAMF1 in a functional ELISA.
2. Measured by its ability to bind recombinant human SLAMF6 in a functional ELISA.
3. Measured by its ability to bind recombinant mouse SLAMF6 in a functional ELISA.
4. Measured by its ability to bind recombinant mouse CD84 in a functional ELISA.

### Purity

> 94 % as determined by SDS-PAGE

### Endotoxin

Please contact us for more information.

### Stability

Samples are stable for up to twelve months from date of receipt at -70°C

### Predicted N terminal

Met

### Molecular Mass

The recombinant human SH2D1A consisting of 139 amino acids and has a calculated molecular mass of 15.6 kDa. It migrates as an approximately 14 kDa band in SDS-PAGE under reducing conditions.

### Formulation

Lyophilized from sterile PBS, pH 7.5, 20% glycerol  
1. 5 % trehalose and mannitol are added as protectants before lyophilization.  
2. Please contact us for any concerns or special requirements.

## Usage Guide

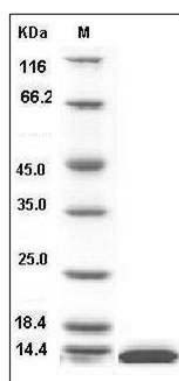
### Storage

Store it under sterile conditions at -20°C to -80°C. It is recommended that the protein be aliquoted for optimal storage. Avoid repeated freeze-thaw cycles.

### Reconstitution

Adding sterile water, prepare a stock solution of 0.25 mg/ml. Concentration is measured by UV-Vis.

### SDS-PAGE



Human SH2D1A Protein (His Tag) SDS-PAGE