

# Human citrate synthase / CS (His Tag) recombinant protein



Catalog Number: 500101

## General Information

### Gene Name Synonym

Citrate (Si)-synthase

### Protein Construction

A DNA sequence encoding the human CS (O75390) (Met1-Gly466) was expressed with a C-terminal polyhistidine tag.

### Organism

Human

### Expression Host

Baculovirus-Insect cells

## QC Testing

### Purity

> 90 % as determined by SDS-PAGE

### Endotoxin

< 1.0 EU per  $\mu\text{g}$  of the protein as determined by the LAL method

### Stability

Samples are stable for up to twelve months from date of receipt at  $-70^{\circ}\text{C}$

### Predicted N terminal

Ala 28

### Molecular Mass

The secreted recombinant human CS consists of

449 amino acids and predicts a molecular mass of 50.4 KDa. The apparent molecular mass of the protein is approximately 46 KDa in SDS-PAGE under reducing conditions.

### Formulation

Lyophilized from sterile 20mM Tris, 500mM NaCl, 10% glycerol, pH 7.0.

1. 5 % trehalose and mannitol are added as protectants before lyophilization.
2. Please contact us for any concerns or special requirements.

## Usage Guide

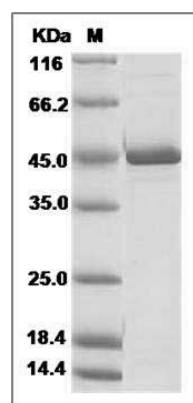
### Storage

Store it under sterile conditions at  $-20^{\circ}\text{C}$  to  $-80^{\circ}\text{C}$ . It is recommended that the protein be aliquoted for optimal storage. Avoid repeated freeze-thaw cycles.

### Reconstitution

Adding sterile water, prepare a stock solution of 0.25 mg/ml. Concentration is measured by UV-Vis.

### SDS-PAGE



Human Citrate synthase / CS Protein (His Tag)  
SDS-PAGE