

# Mouse KLRB1F (Fc Tag) recombinant protein



Catalog Number: 500098

## General Information

### Gene Name Synonym

CD161 antigen-like family member F; Natural killer cell surface protein NKR-P1F

### Protein Construction

A DNA sequence encoding the extracellular domain of mouse KLRB1F (Q8VD98) (Gln 67-Val 217) was fused with the Fc region of human IgG1 at the N-terminus.

### Organism

Mouse

### Expression Host

Human Cells

## QC Testing

### Purity

> 88 % as determined by SDS-PAGE

### Endotoxin

< 1.0 EU per  $\mu\text{g}$  of the protein as determined by the LAL method

### Stability

Samples are stable for up to twelve months from date of receipt at  $-70^{\circ}\text{C}$

### Predicted N terminal

Glu

### Molecular Mass

The recombinant mouse KLRB1F/Fc is a disulfide-

linked homodimer. The reduced monomer comprises 411 amino acids and has a calculated molecular mass of 46 kDa. As a result of glycosylation, the apparent molecular mass of the monomer is approximately 52 kDa in SDS-PAGE under reducing conditions.

### Formulation

Lyophilized from sterile PBS, pH 7.4

1. 5 % trehalose and mannitol are added as protectants before lyophilization.

2. Please contact us for any concerns or special requirements.

## Usage Guide

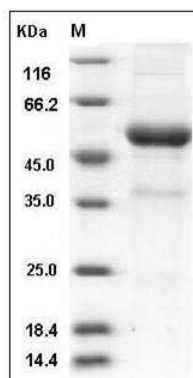
### Storage

Store it under sterile conditions at  $-20^{\circ}\text{C}$  to  $-80^{\circ}\text{C}$ . It is recommended that the protein be aliquoted for optimal storage. Avoid repeated freeze-thaw cycles.

### Reconstitution

Adding sterile water, prepare a stock solution of 0.25 mg/ml. Concentration is measured by UV-Vis.

### SDS-PAGE



Mouse KLRB1F / NKR-P1F Protein (Fc Tag) SDS-PAGE