

# Human CLCF1/NNT-1 (Fc Tag) recombinant protein



Catalog Number: 500096

## General Information

### Gene Name Synonym

B-cell-stimulating factor 3; Novel neurotrophin-1

### Protein Construction

A DNA sequence encoding the human CLCF1 (NP\_037378.1)(Leu28-Phe225) was expressed with the fused Fc region of human IgG1 at the N-terminus.

### Organism

Human

### Expression Host

Human Cells

## QC Testing

### Purity

> 85 % as determined by SDS-PAGE

### Endotoxin

< 1.0 EU per  $\mu$ g of the protein as determined by the LAL method

### Stability

Samples are stable for up to twelve months from date of receipt at -70°C

### Predicted N terminal

Glu

### Molecular Mass

The recombinant human CLCF1/Fc is a disulfide-

linked homodimer. The reduced monomer comprises 458 amino acids and has a predicted molecular mass of 50.7 kDa. The apparent molecular mass of the protein is approximately 54 kDa in SDS-PAGE under reducing conditions.

### Formulation

Lyophilized from sterile PBS, pH 7.4.

1. 5 % trehalose and mannitol are added as protectants before lyophilization.
2. Please contact us for any concerns or special requirements.

## Usage Guide

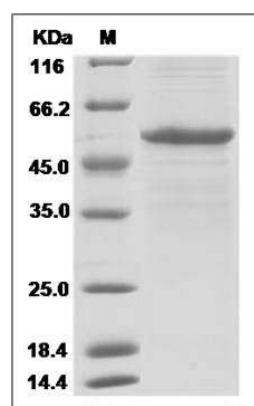
### Storage

Store it under sterile conditions at -20°C to -80°C. It is recommended that the protein be aliquoted for optimal storage. Avoid repeated freeze-thaw cycles.

### Reconstitution

Adding sterile water, prepare a stock solution of 0.25 mg/ml. Concentration is measured by UV-Vis.

### SDS-PAGE



Human NNT1 / CLCF1 / CLC Protein (Fc Tag)  
SDS-PAGE