

Mouse BCL2L1/Bcl-XL (aa 1-212, His Tag) recombinant protein



Catalog Number: 500094

General Information

Gene Name Synonym

Apoptosis regulator Bcl-X

Protein Construction

A DNA sequence encoding the mouse BCL2L1 (Q64373-1) (Met 1-Arg 212) was expressed, with a C-terminal polyhistidine tag.

Organism

Mouse

Expression Host

E. coli

QC Testing

Activity

1. Measured by its binding ability in a functional ELISA.
2. Immobilized human BID at 10 µg/mL (100 µl/well) can bind biotinylated mouse BCL2L1, The EC₅₀ of biotinylated mouse BCL2L1 is 5.6 ng/mL.
3. Immobilized mouse BID at 10 µg/mL (100 µl/well) can bind biotinylated mouse BCL2L1, The EC₅₀ of biotinylated mouse BCL2L1 is 7.1 ng/mL.

Purity

> 95 % as determined by SDS-PAGE

Endotoxin

Please contact us for more information.

Stability

Samples are stable for up to twelve months from date of receipt at -70°C

Predicted N terminal

Met 1

Molecular Mass

The recombinant mouse BCL2L1 comprises 222 amino acids and has a calculated molecular mass of 25.2 kDa. It migrates as an approximately 33 kDa band in SDS-PAGE under reducing conditions.

Formulation

Lyophilized from sterile PBS, pH 7.5

1. 5 % trehalose and mannitol are added as protectants before lyophilization.
2. Please contact us for any concerns or special requirements.

Usage Guide

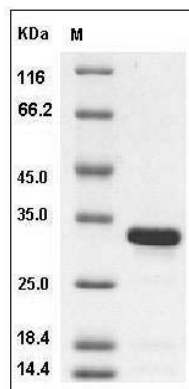
Storage

Store it under sterile conditions at -20°C to -80°C. It is recommended that the protein be aliquoted for optimal storage. Avoid repeated freeze-thaw cycles.

Reconstitution

Adding sterile water, prepare a stock solution of 0.25 mg/ml. Concentration is measured by UV-Vis.

SDS-PAGE



Mouse BCL2L1 / Bcl-XL Protein (aa 1-212, His Tag) SDS-PAGE