

Human METAP1 (Fc Tag) recombinant protein



Catalog Number: 500066

General Information

Gene Name Synonym

Peptidase M 1

Protein Construction

A DNA sequence encoding the N-terminal domain (Met 1-Phe 272) of human METAP1 (NP_055958.2) was fused with the Fc region of human IgG1 at the N-terminus.

Organism

Human

Expression Host

Human Cells

QC Testing

Purity

> 85 % as determined by SDS-PAGE

Endotoxin

< 1.0 EU per μ g of the protein as determined by the LAL method

Stability

Samples are stable for up to twelve months from date of receipt at -70°C

Predicted N terminal

Glu 20

Molecular Mass

The recombinant human Fc/METAP1 is a disulfide-

linked homodimeric protein. The reduced monomer consists of 509 amino acids and has a predicted molecular mass of 57 kDa. As a result of glycosylation, the apparent molecular mass of rh Fc/METAP1 monomer is approximately 60-65 kDa in SDS-PAGE under reducing conditions.

Formulation

Lyophilized from sterile PBS, pH 7.4

1. 5 % trehalose and mannitol are added as protectants before lyophilization.

2. Please contact us for any concerns or special requirements.

Usage Guide

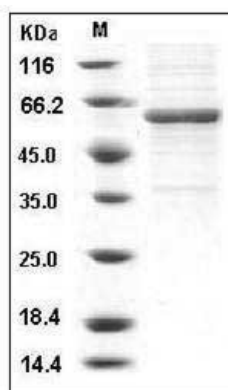
Storage

Store it under sterile conditions at -20°C to -80°C. It is recommended that the protein be aliquoted for optimal storage. Avoid repeated freeze-thaw cycles.

Reconstitution

Adding sterile water, prepare a stock solution of 0.25 mg/ml. Concentration is measured by UV-Vis.

SDS-PAGE



Human METAP1 Protein (Fc Tag) SDS-PAGE