

# Human RGMA (His Tag) recombinant protein



Catalog Number: 500040

## General Information

### Gene Name Synonym

RGM domain family member A

### Protein Construction

A DNA sequence encoding the human RGMA isoform 3 (NP\_064596.2) (Met 1-Gly 422), without the C-terminal pro peptide, was fused with a polyhistidine tag at the C-terminus.

### Organism

Human

### Expression Host

Human Cells

## QC Testing

### Purity

> 90 % as determined by SDS-PAGE

### Endotoxin

< 1.0 EU per  $\mu\text{g}$  of the protein as determined by the LAL method

### Stability

Samples are stable for up to twelve months from date of receipt at  $-70^{\circ}\text{C}$

### Predicted N terminal

Cys 48

### Molecular Mass

The secreted recombinant human RGMA consists of 386 amino acids and has a predicted molecular

mass of 43 kDa. As a result of glycosylation and proteolytic processing, rhRGMA migrates mainly as an approximately 36 kDa in SDS-PAGE corresponding to the mature segment under reducing conditions, and the un-cleaved pro form can also be seen.

### Formulation

Lyophilized from sterile PBS, pH 7.4

1. 5 % trehalose and mannitol are added as protectants before lyophilization.

2. Please contact us for any concerns or special requirements.

## Usage Guide

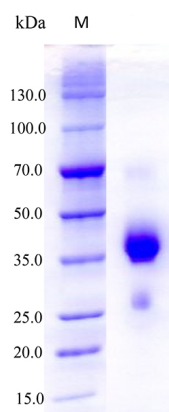
### Storage

Store it under sterile conditions at  $-20^{\circ}\text{C}$  to  $-80^{\circ}\text{C}$ . It is recommended that the protein be aliquoted for optimal storage. Avoid repeated freeze-thaw cycles.

### Reconstitution

Adding sterile water, prepare a stock solution of 0.25 mg/ml. Concentration is measured by UV-Vis.

### SDS-PAGE



Human RGMA Protein (His Tag) SDS-PAGE