

Human LSAMP (Fc Tag) recombinant protein



Catalog Number: 500024

General Information

Gene Name Synonym

IgLON family member 3

Protein Construction

A DNA sequence encoding the human LSAMP (Q13449) (Met 1-Asn 315), without the pro peptide, was fused with the Fc region of human IgG1 at the C-terminus.

Organism

Human

Expression Host

Human Cells

QC Testing

Activity

1. Measured by its binding ability in a functional ELISA.
2. Immobilized recombinant human OPCML-His (Cat:500352) at 10 µg/mL can bind recombinant human LSAMP-Fc with a linear range of 31.25-250 ng/ml.

Purity

> 97 % as determined by SDS-PAGE

Endotoxin

< 1.0 EU per µg of the protein as determined by the LAL method

Stability

Samples are stable for up to twelve months from date of receipt at -70°C

Predicted N terminal

Val 29

Molecular Mass

The secreted recombinant human LSAMP/Fc is a disulfide-linked homodimer. The reduced monomer consists of 528 amino acids and has a predicted molecular mass of 59 kDa. As a result of glycosylation, the apparent molecular mass of rhLSAMP/Fc monomer is approximately 80-85 kDa in SDS-PAGE under reducing conditions.

Formulation

Lyophilized from sterile PBS, pH 7.4

1. 5 % trehalose and mannitol are added as protectants before lyophilization.
2. Please contact us for any concerns or special requirements.

Usage Guide

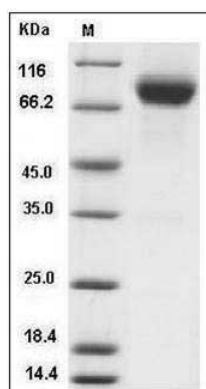
Storage

Store it under sterile conditions at -20°C to -80°C. It is recommended that the protein be aliquoted for optimal storage. Avoid repeated freeze-thaw cycles.

Reconstitution

Adding sterile water, prepare a stock solution of 0.25 mg/ml. Concentration is measured by UV-Vis.

SDS-PAGE



Human LSAMP Protein (Fc Tag) SDS-PAGE