

# Human GYPA / CD235a / Glycophorin A (His Tag) recombinant protein



Catalog Number: 500017

## General Information

### Gene Name Synonym

MN sialoglycoprotein; PAS-2; Sialoglycoprotein alpha

### Protein Construction

A DNA sequence encoding the human GYPA (P02724) (Met1-Glu91) was expressed with a C-terminal polyhistidine tag.

### Organism

Human

### Expression Host

Human Cells

## QC Testing

### Purity

(79.9+19.9) % as determined by SDS-PAGE

### Endotoxin

< 1.0 EU per µg of the protein as determined by the LAL method

### Stability

Samples are stable for up to twelve months from date of receipt at -70°C

### Predicted N terminal

Ser 20

### Molecular Mass

The recombinant human GYPA comprises 83

amino acids and has a predicted molecular mass of 9.4 kDa. The apparent molecular mass of the protein is approximately 35-45 and 20 kDa in SDS-PAGE under reducing conditions due to glycosylation.

### Formulation

Lyophilized from sterile PBS, pH 7.4.

1. 5 % trehalose and mannitol are added as protectants before lyophilization.
2. Please contact us for any concerns or special requirements.

## Usage Guide

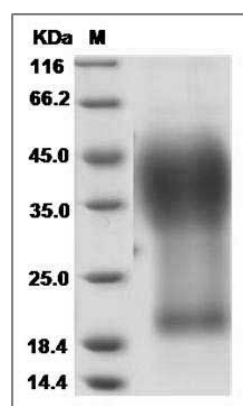
### Storage

Store it under sterile conditions at -20°C to -80°C. It is recommended that the protein be aliquoted for optimal storage. Avoid repeated freeze-thaw cycles.

### Reconstitution

Adding sterile water, prepare a stock solution of 0.25 mg/ml. Concentration is measured by UV-Vis.

### SDS-PAGE



Human GYPA / CD235a / Glycophorin A Protein (His Tag) SDS-PAGE