

# Anti-CREB Rabbit antibody



Catalog Number: 167297

## Product name

Anti-CREB Rabbit antibody

ICC/IF: 1/50-1/200

IP: 1/50

FC: 1/50

## Specificity

Human, Mouse, Rat

## Antibody description

CREB Rabbit polyclonal antibody

## Preparation

Antigen: A synthesized peptide derived from human CREB

## Formulation

Rabbit IgG in phosphate buffered saline , pH 7.4, 150mM NaCl, 0.02% sodium azide and 50% glycerol.

## Storage

Store at 4°C short term. Store at -20°C long term. Avoid freeze / thaw cycle.

## Clonality

Polyclonal

## Ig Type

Rabbit IgG

## Applications

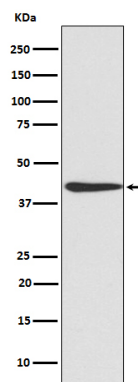
WB, IHC-P, ICC/IF, IP, FC

## Dilutions

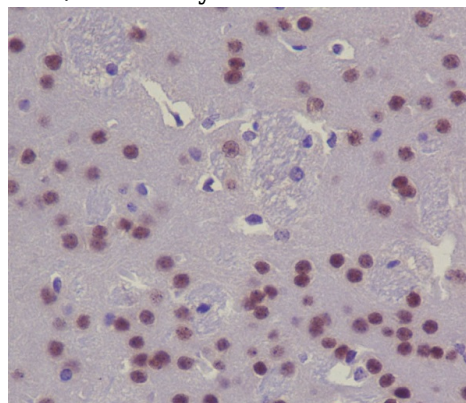
WB: 1/500-1/2000

IHC: 1/50-1/200

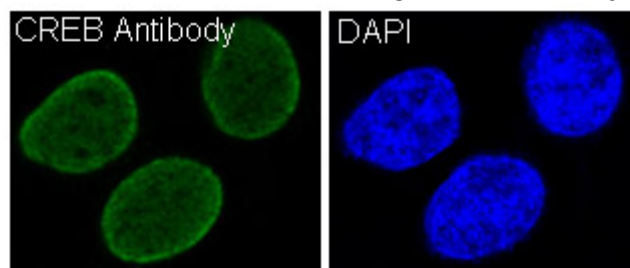
## Validations



Western blot analysis of CREB expression in NIH/3T3 cell lysate.



Immunohistochemical analysis of paraffin-embedded mouse brain, using CREB Antibody.



Immunofluorescent analysis of HeLa cells, using CREB Antibody .