

Anti-KAT1/HAT1 Rabbit antibody



Catalog Number: 167197

Product name

Anti-KAT1/HAT1 Rabbit antibody

WB: 1/1000

IHC: 1/100

Specificity

Human, Mouse, Rat

ICC/IF: 1/100

FC: 1/20

Antibody description

KAT1/HAT1 Rabbit polyclonal antibody

IP: 1/20

Validations

Preparation

Antigen: Recombinant protein of human KAT1

Formulation

Supplied in 50nM Tris-Glycine(pH 7.4), 0.15M NaCl, 40%Glycerol, 0.01% sodium azide and 0.05% BSA.

Storage

Store at -20°C. Stable for 12 months from date of receipt.

Clonality

Polyclonal

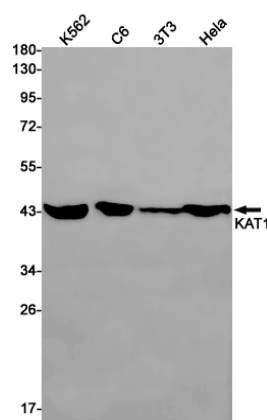
Ig Type

Rabbit IgG

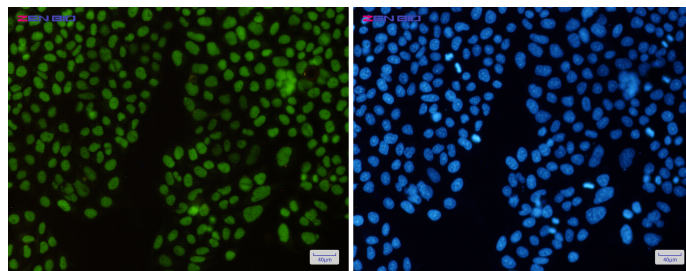
Applications

WB, IHC-P, ICC/IF, FC, IP

Dilutions



Western blot detection of KAT1 in K562,C6,3T3,HeLa cell lysates using KAT1 Rabbit pAb(1:1000 diluted).Predicted band size:50kDa.Observed band size:45kDa.



Immunocytochemistry of KAT1(green) in HeLa cells using KAT1 Rabbit pAb at dilution 1/50, and DAPI(blue)