

# Human TGFBR2 (His & Fc Tag) recombinant protein



Catalog Number: 500197

## General Information

### Gene Name Synonym

TGF-beta type II receptor; Transforming growth factor-beta receptor type II

### Protein Construction

A DNA sequence encoding the extracellular domain (Met 1-Asp 159) of human TGF $\beta$  receptor 2 (NP\_003233.4) was expressed with the fused C-terminal His-tagged Fc region of human IgG1 at the C-terminus.

### Organism

Human

### Expression Host

Human Cells

## QC Testing

### Activity

Measured by its ability to inhibit TGF-beta1 activity on Mv-1-lu mink lung epithelial cells. The ED<sub>50</sub> for this effect is typically 0.2-3.0  $\mu$ g/ml in the presence of 1 ng/mL of recombinant human TGF-beta1.

### Purity

> 97 % as determined by SDS-PAGE

### Endotoxin

< 1.0 EU per  $\mu$ g of the protein as determined by the LAL method

### Stability

Samples are stable for up to twelve months from date of receipt at -70°C

### Predicted N terminal

Ile 24

### Molecular Mass

The recombinant human TGF $\beta$  R2/Fc is a disulfide-linked homodimeric protein after removal of the signal peptide. The monomer consists of 383 amino acids and predicts a molecular mass of 43.4 kDa. By SDS-PAGE under reducing conditions, the apparent molecular mass of this monomer is approximately 60-65 kDa due to the glycosylation.

### Formulation

Lyophilized from sterile 100mM Glycine, 10mM NaCl, 50mM Tris, pH 7.5

1. 5 % trehalose and mannitol are added as protectants before lyophilization.
2. Please contact us for any concerns or special requirements.

## Usage Guide

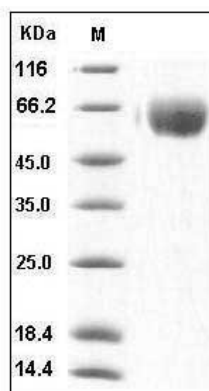
### Storage

Store it under sterile conditions at -20°C to -80°C. It is recommended that the protein be aliquoted for optimal storage. Avoid repeated freeze-thaw cycles.

### Reconstitution

Adding sterile water, prepare a stock solution of 0.25 mg/ml. Concentration is measured by UV-Vis.

### SDS-PAGE



# Human TGFBR2 (His & Fc Tag) recombinant protein



Catalog Number: 500197

---

Human TGFBR2 Protein (His & Fc Tag) SDS-PAGE