

# REM2 antibody



Catalog Number: 114687

## Product name

REM2 antibody

## Immunogen

[Human REM2 Recombinant protein \(GST tag & His tag\)](#)

## Specificity

Human; other species not tested.

## Antibody description

REM2 Rabbit Polyclonal antibody. Positive WB detected in fetal human brain tissue. Observed molecular weight by Western-blot: 37 kDa

## Preparation

This antibody was obtained by immunization of REM2 recombinant protein (Accession Number: BC035663). Purification method: Antigen affinity purified.

## Formulation

PBS with 0.1% sodium azide and 50% glycerol pH 7.3.

## Storage

Store at -20°C. DO NOT ALIQUOT

## Clonality

Polyclonal

## Ig Type

Rabbit IgG

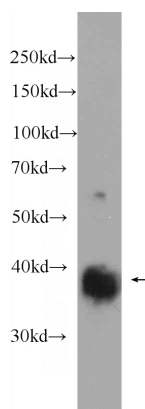
## Applications

ELISA, WB

## Dilutions

Recommended Dilution:  
WB: 1:500-1:5000

## Validations



fetal human brain tissue were subjected to SDS PAGE followed by western blot with Catalog No:114687(REM2 Antibody) at dilution of 1:1000