

# BCL2L13 Polyclonal Antibody



Catalog Number: 160687

## Product name

BCL2L13 Polyclonal Antibody

## Specificity

Human

## Antibody description

Polyclonal antibody to BCL2L13

## Preparation

Antigen: Recombinant fusion protein containing a sequence corresponding to amino acids 1-300 of human BCL2L13 (NP\_056182.2).

## Formulation

PBS with 0.02% sodium azide, 50% glycerol, pH7.3.

## Storage

Store at -20°C. Avoid freeze / thaw cycles.

## Clonality

Polyclonal

## Ig Type

Rabbit IgG

## Applications

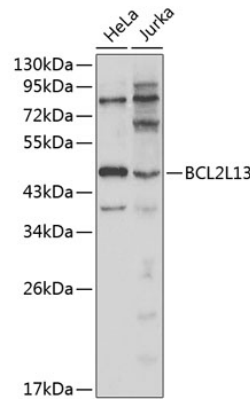
WB, IF

## Dilutions

WB 1:500 - 1:2000

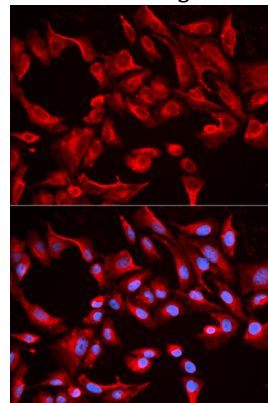
IF 1:20 - 1:50

## Validations



Western blot - BCL2L13 Polyclonal Antibody

Western blot analysis of extracts of various cell lines, using BCL2L13 antibody. Secondary antibody: HRP Goat Anti-Rabbit IgG (H+L) at 1:10000 dilution. Lysates/proteins: 25ug per lane. Blocking buffer: 3% nonfat dry milk in TBST.



Immunofluorescence - BCL2L13 Polyclonal Antibody

Immunofluorescence analysis of HeLa cells using BCL2L13 antibody. Blue: DAPI for nuclear staining.