

Anti-GSK3 alpha Rabbit antibody



Catalog Number: 166777

Product name

Anti-GSK3 alpha Rabbit antibody

Specificity

Human, Mouse, Rat

Antibody description

GSK3 alpha Rabbit polyclonal antibody

Preparation

Antigen: Peptide sequence around aa.19~23 (T-S-S-F-A) derived from Human GSK3 α .

Formulation

Supplied at 1.0mg/mL in phosphate buffered saline (without Mg²⁺ and Ca²⁺), pH 7.4, 150mM NaCl, 0.02% sodium azide and 50% glycerol.

Storage

Store at 4°C short term. Store at -20°C long term. Avoid freeze / thaw cycle.

Clonality

Polyclonal

Ig Type

Rabbit IgG

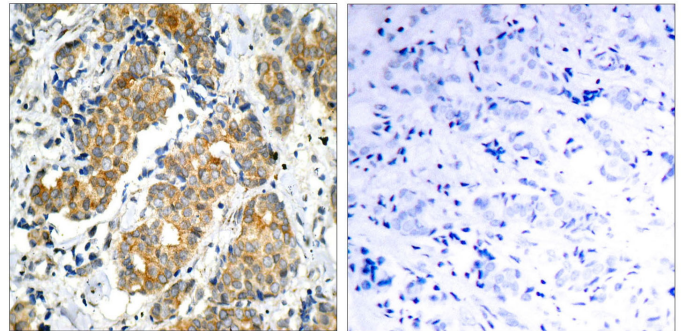
Applications

WB, IHC-P, ICC/IF

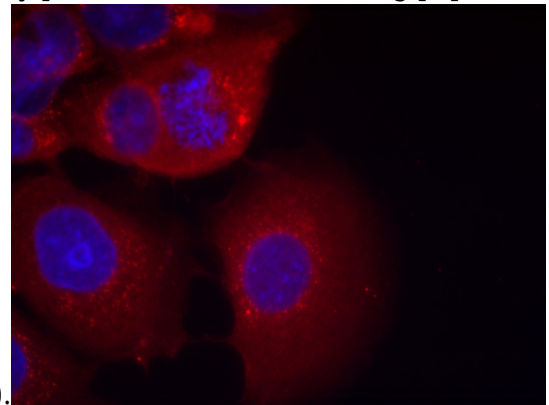
Dilutions

WB:1/500-1/1000 ICC:1/100-1/200 IHC:1/50-1/100

Validations

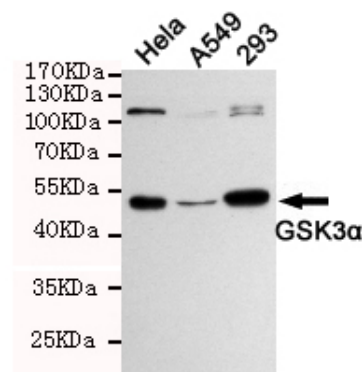


Immunohistochemical analysis of paraffin-embedded human breast carcinoma tissue using GSK3u03b1 (Ab-21) Antibody (left) or the same antibody preincubated with blocking peptide



(right).

Immunofluorescence staining of methanol-fixed MCF7 cells using GSK3u03b1 (Ab-21) Antibody .



Western blot analysis of extracts from 293, HeLa and A549 cells using GSK3u03b1 (Ab-21) rabbit pAb (1:1000 diluted). Predicted band size: 51kDa. Observed band size: 51kDa.