

# PLOD3 antibody



Catalog Number: 107477

## Product name

PLOD3 antibody

IP: 1:200-1:2000

IHC: 1:20-1:200

## Specificity

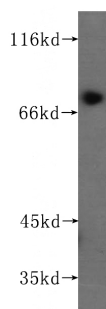
Human; other species not tested.

IF: 1:10-1:100

## Validations

## Antibody description

PLOD3 Mouse Monoclonal antibody. Positive IP detected in HeLa cells. Positive WB detected in Human placenta, PC-3 cells. Positive IF detected in HeLa cells. Positive IHC detected in human pancreas cancer tissue. Observed molecular weight by Western-blot: 80-85 kDa



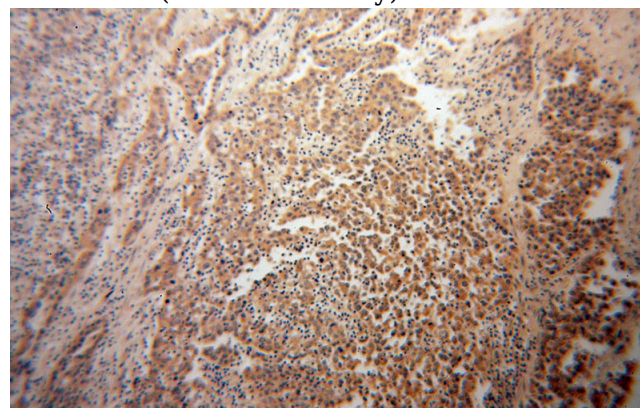
## Preparation

This antibody was obtained by immunization of PLOD3 recombinant protein (Accession Number: NM\_001084). Purification method: Caprylic Acid/Ammonium Sulfate Precipitation.

human placenta tissue were subjected to SDS PAGE followed by western blot with Catalog No:107477(PLOD3 antibody) at dilution of 1:300

## Formulation

PBS with 0.1% sodium azide and 50% glycerol pH 7.3.



## Storage

Store at -20°C. DO NOT ALIQUOT

## Clonality

Monoclonal

## Ig Type

Mouse IgG2a

## Applications

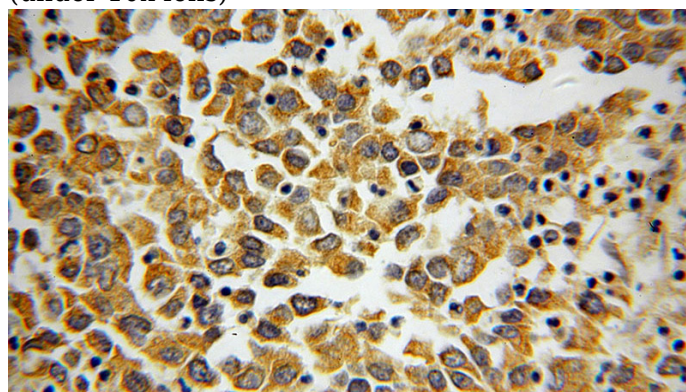
ELISA, WB, IHC, IF, IP

## Dilutions

Recommended Dilution:

WB: 1:200-1:1000

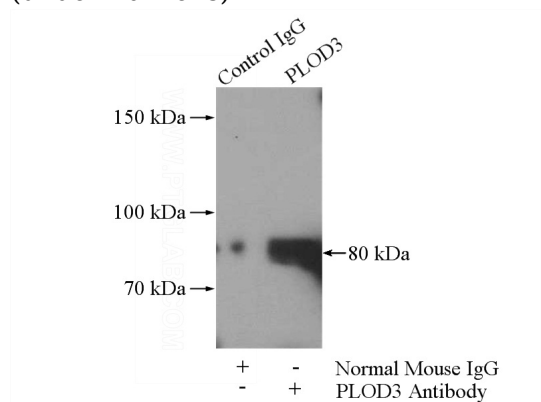
Immunohistochemical of paraffin-embedded human pancreas cancer using Catalog No:107477(PLOD3 antibody) at dilution of 1:100 (under 10x lens)



# PLOD3 antibody

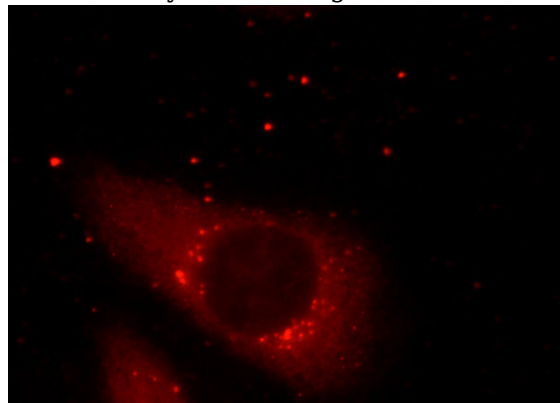
Catalog Number: 107477

Immunohistochemical of paraffin-embedded human pancreas cancer using Catalog No:107477(PLOD3 antibody) at dilution of 1:100 (under 40x lens)



IP Result of anti-PLOD3 (IP:Catalog No:107477,

5ug; Detection:Catalog No:107477 1:500) with HeLa cells lysate 1400ug.



Immunofluorescent analysis of HeLa cells using Catalog No:107477(PLOD3 Antibody) at dilution of 1:25 and Rhodamine-Goat anti-Mouse IgG