

Anti-HMGA1 Rabbit antibody



Catalog Number: 167367

Product name

Anti-HMGA1 Rabbit antibody

Specificity

Human

Antibody description

HMGA1 Rabbit polyclonal antibody

Preparation

Antigen: A synthetic peptide of human HMGA1

Formulation

Supplied in 50nM Tris-Glycine(pH 7.4), 0.15M NaCl, 40%Glycerol, 0.01% sodium azide and 0.05% BSA.

Storage

Store at -20°C. Stable for 12 months from date of receipt.

Clonality

Polyclonal

Ig Type

Rabbit IgG

Applications

WB, IHC-P, ICC/IF, FC, IP

Dilutions

WB: 1/1000

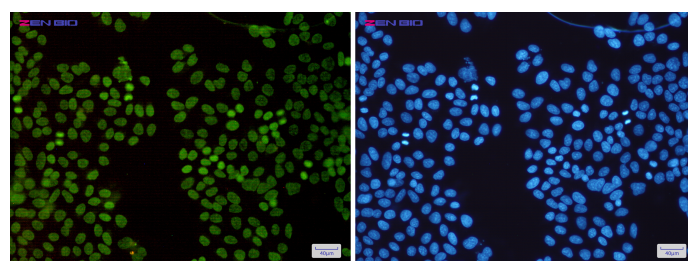
IHC: 1/200

ICC/IF: 1/100

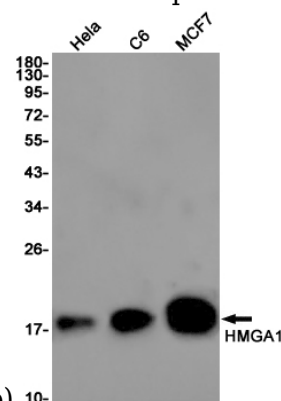
FC: 1/100

IP: 1/20

Validations



Immunocytochemistry of HMGA1(green) in HeLa cells using HMGA1 Rabbit pAb at dilution 1/50, and DAPI(blue)



Western blot detection of HMGA1 in HeLa, C6, MCF7 cell lysates using HMGA1 Rabbit pAb(1:1000 diluted). Predicted band size: 12KDa. Observed band size: 18KDa.