

MDC1 antibody



Catalog Number: 112567

Product name

MDC1 antibody

Specificity

Human; other species not tested.

Antibody description

MDC1 Rabbit Polyclonal antibody. Positive IHC detected in human testis tissue, human appendix tissue, human breast cancer tissue. Positive IF detected in HEK-293 cells, HeLa cells.

Preparation

This antibody was obtained by immunization of MDC1 recombinant protein (Accession Number: BC152556). Purification method: Antigen affinity purified.

Formulation

PBS with 0.1% sodium azide and 50% glycerol pH 7.3.

Storage

Store at -20°C. DO NOT ALIQUOT

Clonality

Polyclonal

Ig Type

Rabbit IgG

Applications

ELISA, IHC, IF

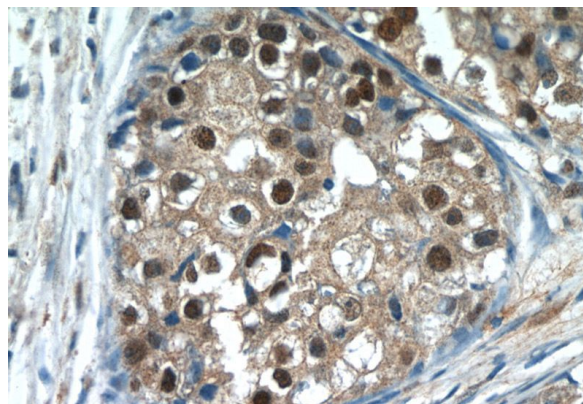
Dilutions

Recommended Dilution:

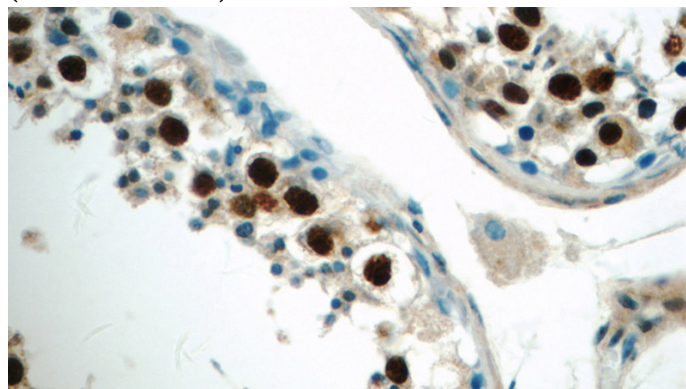
IHC: 1:20-1:200

IF: 1:10-1:100

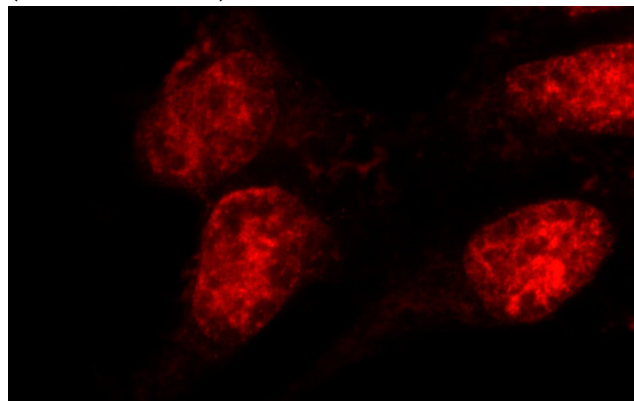
Validations



Immunohistochemistry of paraffin-embedded human breast cancer tissue slide using Catalog No:112567(MDC1 Antibody) at dilution of 1:50 (under 40x lens)



Immunohistochemistry of paraffin-embedded human testis tissue slide using Catalog No:112567(MDC1 Antibody) at dilution of 1:50 (under 40x lens)



Immunofluorescent analysis of HEK-293 cells using Catalog No:112567(MDC1 Antibody) at dilution of 1:25 and Rhodamine-Goat anti-Rabbit IgG