

# Anti-Ccne1 antibody

Catalog Number: 175357

## Product name

FC:1µg/Test

Anti-Ccne1 antibody

IF:1:100-500

## Specificity

Human, Mouse, Rat

## Validations

## Antibody description

Rabbit polyclonal antibody to Ccne1

## Preparation

This antigen of this antibody was klh conjugated synthetic peptide derived from rat cyclin e 375-411/411

## Formulation

Liquid, 0.01M TBS(pH7.4) with 1% BSA, 0.03% Proclin300 and 50% Glycerol.

## Storage

Store at -20°C for one year. Avoid repeated freeze/thaw cycles. The lyophilized antibody is stable at room temperature for at least one month and for greater than a year when kept at -20°C. When reconstituted in sterile pH 7.4 0.01M PBS or diluent of antibody the antibody is stable for at least two weeks at 2-4°C.

## Clonality

Polyclonal

## Ig Type

Rabbit IgG

## Applications

WB, IHC-P, ICC/IF, FC

## Dilutions

WB:1:500-2000

IHC-P:1:400-800

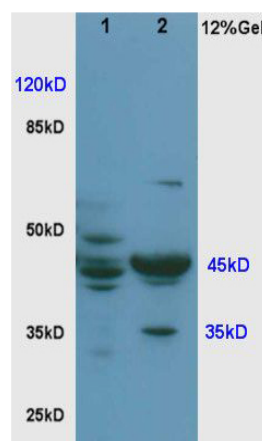


Fig1: Sample:; Brain(Rat) lysate at30ug;; Lung(Rat) lysate at 30ug;; Primary: Anti-Cyclin E at 1:200;; Secondary: HRP conjugated Goat-Anti-Rabbit IgG(bse-0295G) at 1: 3000;; Predicted band size : 45kD; Observed band size : 45kD

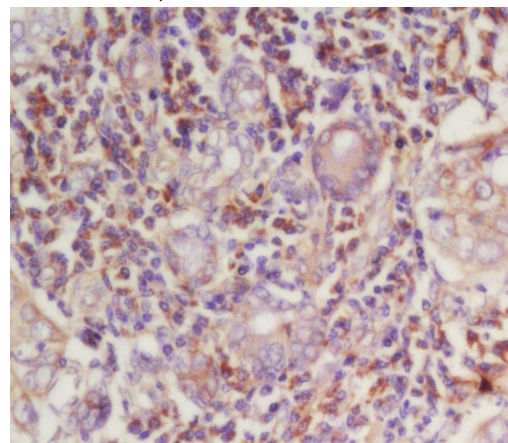
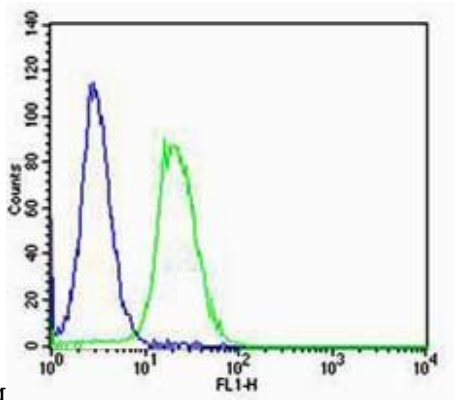


Fig2: Tissue/cell: human laryngocarcinoma; 4% Paraformaldehyde-fixed and paraffin-embedded;; Antigen retrieval: citrate buffer ( 0.01M, pH 6.0 ), Boiling bathing for 15min; Block endogenous peroxidase by 3% Hydrogen peroxide for 30min; Blocking buffer (normal goat serum,C-0005) at 37°C for 20 min;; Incubation: Anti-Cyclin-E Polyclonal Antibody, Unconjugated 1:200, overnight at 4°C, followed by conjugation to the secondary antibody(SP-0023) and DAB(C-0010)

# Anti-Ccne1 antibody

Catalog Number: 175357



staining

Fig3: Cell: NIH/3T3; Concentration:1:100; Host/Isotype:Rabbit/IgG; Flow cytometric analysis of primary antibody (Cat#: 175357#) on NIH/3T3(green) compared with Rabbit IgG isotype control in the absence of primary antibody (blue) followed by Alexa Fluor 488-conjugated goat anti-rabbit IgG(H+L) secondary antibody .

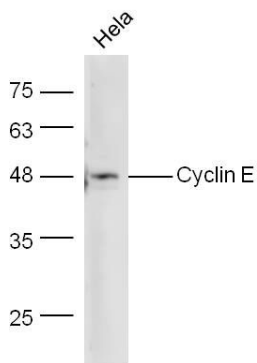
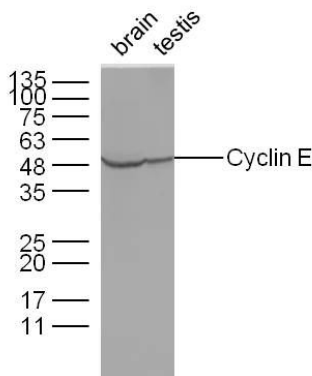


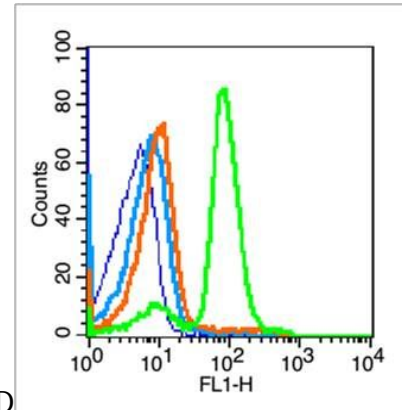
Fig4: Sample: HeLa Lysate at 40 ug; Primary: Anti-Cyclin E at 1/300 dilution; Secondary: IRDye800CW Goat Anti-Rabbit IgG at 1/10000 dilution; Predicted band size: 45 kD; Observed



band size: 48 kD

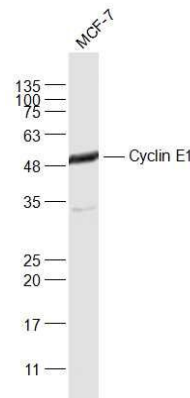
Fig5: Sample:; Brain(Mouse) Lysate at 40 ug; Testis(Mouse) Lysate at 40 ug; Primary: Anti-

Cyclin E at 1/300 dilution; Secondary: IRDye800CW Goat Anti-Rabbit IgG at 1/10000 dilution; Predicted band size: 45 kD; Observed



band size: 48 kD

Fig6: Blank control (blue line): Mouse spleen cells (blue).; Primary Antibody (green line): Rabbit Anti-Cyclin E1 antibody ; Dilution: 1µg /10<sup>6</sup> cells;; Isotype Control Antibody (orange line): Rabbit IgG .; Secondary Antibody (white blue line): Goat anti-rabbit IgG-FITC; Dilution: 1µg /test.; Protocol; The cells were fixed with 70% ethanol (overnight at 4°C) and then permeabilized with 0.1% PBS-Tween for 20 min at room temperature. Cells stained with Primary Antibody for 30 min at room temperature. The cells were then incubated in 1 X PBS/2%BSA/10% goat serum to block non-specific protein-protein interactions followed by the antibody for 15 min at room temperature. The secondary antibody used for 40 min at room temperature. Acquisition of 20,000 events was



performed.

Fig7: Sample:; MCF-7(Human) Cell Lysate at 30 ug; Primary: Anti-Cyclin E1 at 1/1000 dilution; Secondary: IRDye800CW Goat Anti-Rabbit IgG at 1/20000 dilution; Predicted band size: 45 kD;

# Anti-Ccne1 antibody

Catalog Number: 175357

---

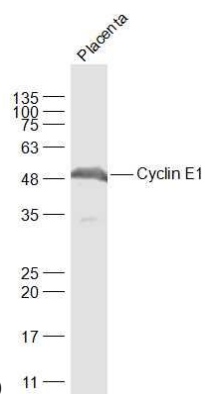


Fig8: Sample:; Placenta (Mouse) Lysate at 40 ug;  
Primary: Anti-Cyclin E1 at 1/1000 dilution;  
Secondary: IRDye800CW Goat Anti-Rabbit IgG at  
1/20000 dilution; Predicted band size: 45 kD;  
Observed band size: 48 kD

Observed band size: 48 kD