

Product name

SNRPA1 antibody

Immunogen

[Human SNRPA1 Recombinant protein \(GST tag & His tag\)](#)

Specificity

Human, Mouse, Rat; other species not tested.

Antibody description

SNRPA1 Rabbit Polyclonal antibody. Positive IHC detected in human lung tissue, human brain tissue, human kidney tissue, human liver tissue, human ovary tissue, human placenta tissue, human spleen tissue, human testis tissue. Positive IF detected in HepG2 cells. Positive IP detected in HepG2 cells. Positive WB detected in HeLa cells, HepG2 cells, Jurkat cells, MCF7 cells, Raji cells. Observed molecular weight by Western-blot: 28 kDa

Preparation

This antibody was obtained by immunization of SNRPA1 recombinant protein (Accession Number: NM_003090). Purification method: Antigen affinity purified.

Formulation

PBS with 0.02% sodium azide and 50% glycerol pH 7.3.

Storage

Store at -20°C. DO NOT ALIQUOT

Clonality

Polyclonal

Ig Type

Rabbit IgG

Applications

ELISA, WB, IHC, IF, IP

Dilutions

Recommended Dilution:

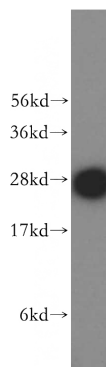
WB: 1:1000-1:10000

IP: 1:200-1:2000

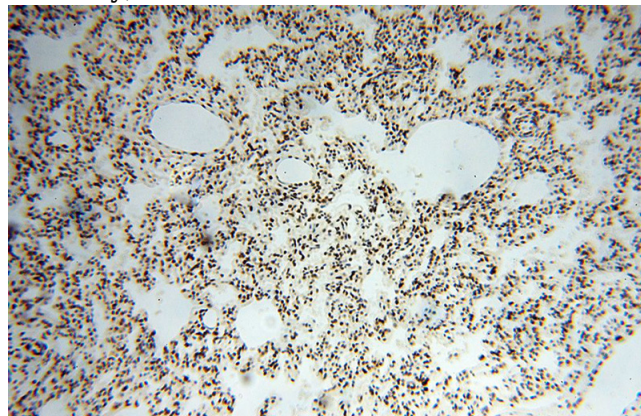
IHC: 1:20-1:200

IF: 1:10-1:100

Validations



HeLa cells were subjected to SDS PAGE followed by western blot with Catalog No:115457(SNRPA1 antibody) at dilution of 1:500

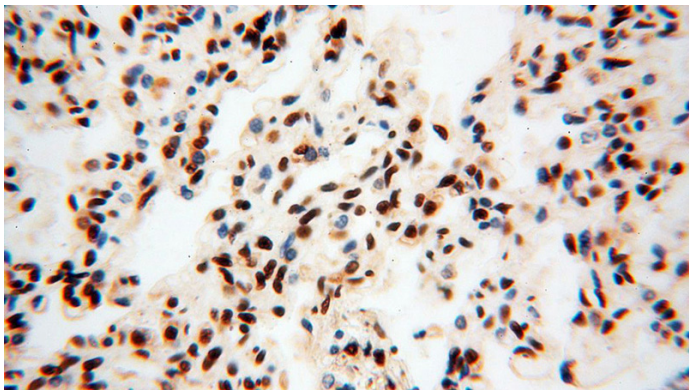


Immunohistochemical of paraffin-embedded human lung using Catalog No:115457(SNRPA1 antibody) at dilution of 1:100 (under 10x lens)

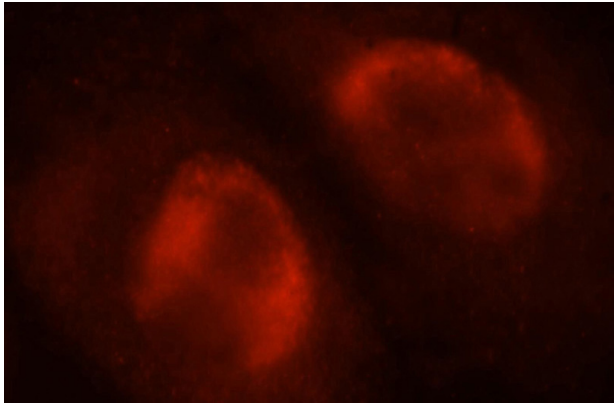
SNRPA1 antibody



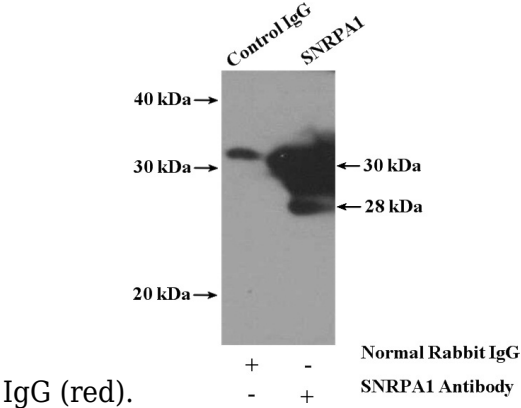
Catalog Number: 115457



Immunohistochemical of paraffin-embedded human lung using Catalog No:115457(SNRPA1 antibody) at dilution of 1:100 (under 40x lens)



Immunofluorescent analysis of HepG2 cells, using SNRPA1 antibody Catalog No:115457 at 1:25 dilution and Rhodamine-labeled goat anti-rabbit



IgG (red).

IP Result of anti-SNRPA1 (IP:Catalog No:115457, 4ug; Detection:Catalog No:115457 1:500) with HepG2 cells lysate 1000ug.