

# ATP2A1 antibody



Catalog Number: 108347

## Product name

ATP2A1 antibody

Recommended Dilution:

IP: 1:200-1:2000

## Immunogen

IHC: 1:50-1:500

[Human ATP2A1 Recombinant protein \(GST tag & His tag\)](#)

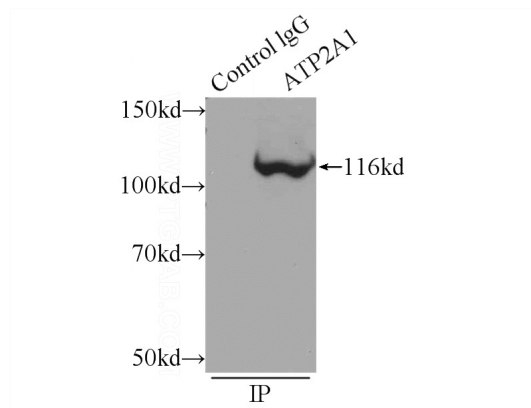
## Validations

## Specificity

Human, Mouse; other species not tested.

## Antibody description

ATP2A1 Rabbit Polyclonal antibody. Positive IHC detected in human skeletal muscle tissue, human heart tissue. Positive IP detected in mouse skeletal muscle tissue. Observed molecular weight by Western-blot: 116 kDa



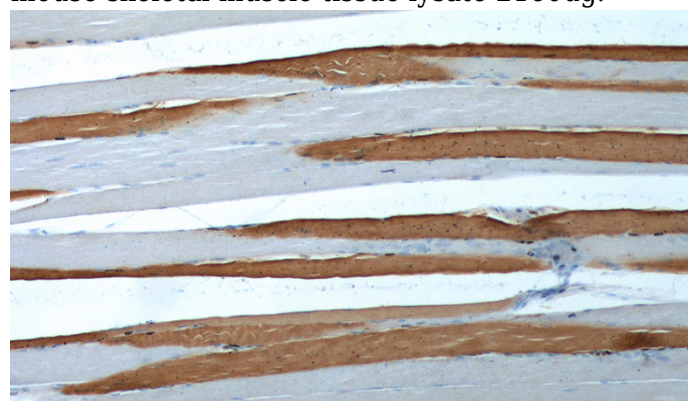
## Preparation

This antibody was obtained by immunization of ATP2A1 recombinant protein (Accession Number: BC037354). Purification method: Antigen Affinity purified.

IP Result of anti-ATP2A1 (IP:Catalog No:108347, 5ug; Detection:Catalog No:108347 1:700) with mouse skeletal muscle tissue lysate 2160ug.

## Formulation

PBS with 0.02% sodium azide and 50% glycerol pH 7.3.



## Storage

Store at -20°C. DO NOT ALIQUOT

## Clonality

Polyclonal

Immunohistochemistry of paraffin-embedded human skeletal muscle tissue slide using Catalog No:108347(ATP2A1 Antibody) at dilution of 1:200 (under 10x lens).

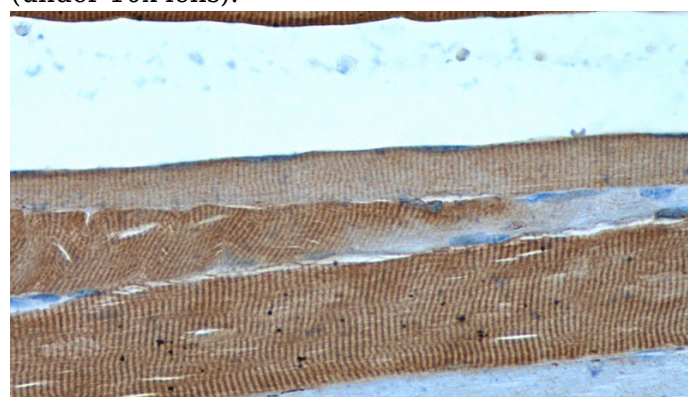
## Ig Type

Rabbit IgG

## Applications

ELISA, IP, IHC

## Dilutions



# ATP2A1 antibody



Catalog Number: 108347

---

Immunohistochemistry of paraffin-embedded  
human skeletal muscle tissue slide using Catalog

No:108347(ATP2A1 Antibody) at dilution of 1:200  
(under 40x lens).