

Anti-eIF3B Rabbit antibody



Catalog Number: 167347

Product name

Anti-eIF3B Rabbit antibody

Specificity

Human, Mouse, Rat

Antibody description

eIF3B Rabbit polyclonal antibody

Preparation

Antigen: A synthetic peptide of human eIF3B

Formulation

Supplied in 50nM Tris-Glycine(pH 7.4), 0.15M NaCl, 40%Glycerol, 0.01% sodium azide and 0.05% BSA.

Storage

Store at -20°C. Stable for 12 months from date of receipt.

Clonality

Polyclonal

Ig Type

Rabbit IgG

Applications

WB, ICC/IF, FC, IP

Dilutions

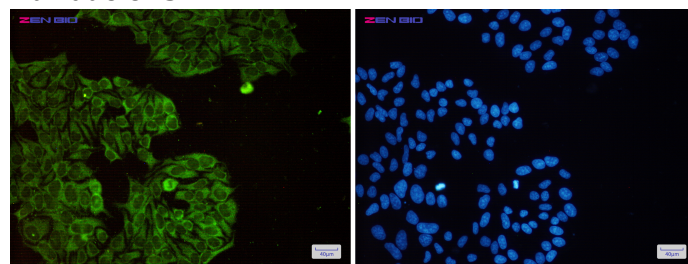
WB: 1/2000-1/10000

ICC/IF: 1/20-1/50

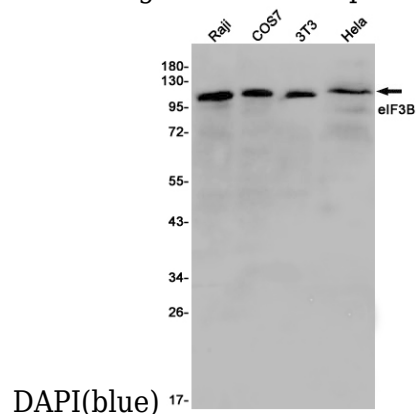
FC: 1/20

IP: 1/20-1/50

Validations



Immunocytochemistry of eIF3B(green) in HeLa cells using eIF3B Rabbit pAb at dilution 1/50, and



Western blot detection of eIF3B in Raji, COS7, 3T3, HeLa cell lysates using eIF3B Rabbit pAb(1:1000 diluted). Predicted band size: 93KDa. Observed band size: 117KDa.