

NME2 antibody



Catalog Number: 113247

Product name

NME2 antibody

Recommended Dilution:

WB: 1:200-1:2000

Immunogen

IHC: 1:20-1:200

[Human NME2 Recombinant protein \(GST tag & His tag\)](#)

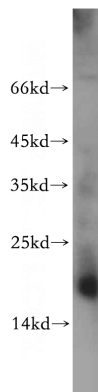
Validations

Specificity

Human, Mouse, Rat; other species not tested.

Antibody description

NME2 Rabbit Polyclonal antibody. Positive WB detected in mouse kidney tissue, Jurkat cells, mouse liver tissue. Positive IHC detected in human kidney tissue, human heart tissue. Observed molecular weight by Western-blot: 17kd



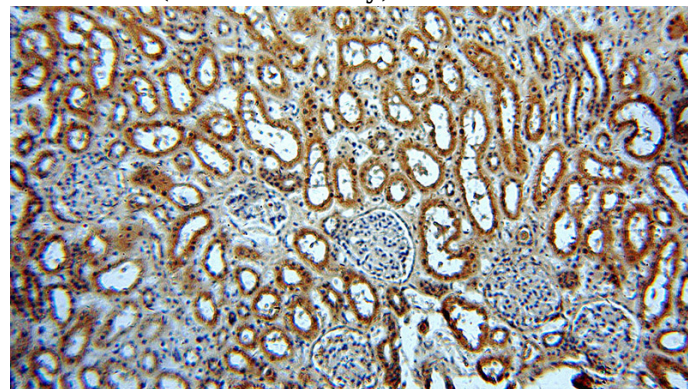
Preparation

This antibody was obtained by immunization of NME2 recombinant protein (Accession Number: NM_001018137). Purification method: Antigen affinity purified.

mouse kidney tissue were subjected to SDS PAGE followed by western blot with Catalog No:113247(NME2 antibody) at dilution of 1:200

Formulation

PBS with 0.02% sodium azide and 50% glycerol pH 7.3.



Storage

Store at -20°C. DO NOT ALIQUOT

Immunohistochemical of paraffin-embedded human kidney using Catalog No:113247(NME2 antibody) at dilution of 1:50 (under 10x lens)

Clonality

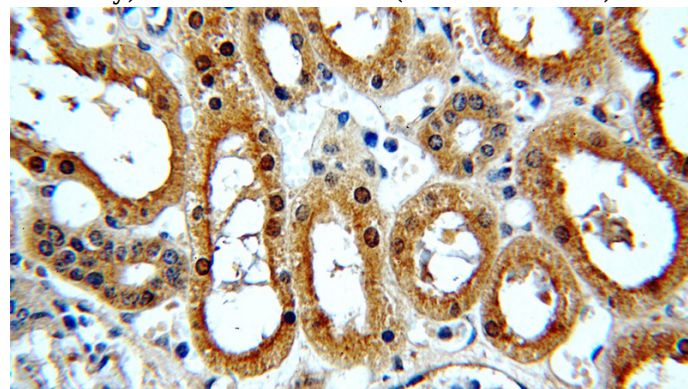
Polyclonal

Ig Type

Rabbit IgG

Applications

ELISA, WB, IHC



Dilutions

Immunohistochemical of paraffin-embedded

NME2 antibody



Catalog Number: 113247

human kidney using Catalog No:113247(NME2 antibody) at dilution of 1:50 (under 40x lens)