

# Human MKK6/MEK6/MAP2K6 recombinant protein



Catalog Number: 500737

## General Information

### Gene Name Synonym

MAP kinase kinase 6; MAPKK 6; EC 2.7.12.2; MAPK/ERK kinase 6; MEK 6; Stress-activated protein kinase kinase 3; SAPK kinase 3; SAPKK-3; SAPKK3

### Protein Construction

A DNA sequence encoding the human MKK6 (NP\_002749.2) (Met 1-Asp334) was expressed and purified with two additional amino acids (Gly & Pro ) at the N-terminus.

### Organism

Human

### Expression Host

Baculovirus-Insect Cells

## QC Testing

### Activity

Kinase activity untested

### Purity

> 95 % as determined by SDS-PAGE

### Endotoxin

< 1.0 EU per  $\mu\text{g}$  of the protein as determined by the LAL method

### Stability

Samples are stable for up to twelve months from date of receipt at  $-70^{\circ}\text{C}$

### Predicted N terminal

Gly

## Molecular Mass

The secreted recombinant human MKK6 consists of 336 amino acids and predicts a molecular mass of 37.6 KDa. The apparent molecular mass of the protein is approximately 37 KDa in SDS-PAGE under reducing conditions due to glycosylation.

## Formulation

Lyophilized from sterile 20mM Tris, 500mM NaCl, 3mM DTT, 10% glycerol, pH 8.0.

1. 5 % trehalose and mannitol are added as protectants before lyophilization.

2. Please contact us for any concerns or special requirements.

## Usage Guide

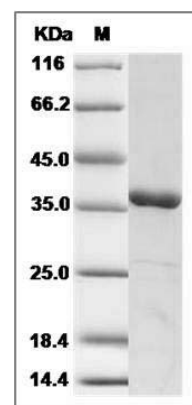
### Storage

Store it under sterile conditions at  $-20^{\circ}\text{C}$  to  $-80^{\circ}\text{C}$ . It is recommended that the protein be aliquoted for optimal storage. Avoid repeated freeze-thaw cycles.

### Reconstitution

Adding sterile water, prepare a stock solution of 0.25 mg/ml. Concentration is measured by UV-Vis.

## SDS-PAGE



Human MKK6 / MEK6 / MAP2K6 Protein SDS-PAGE