

APEX1 antibody



Catalog Number: 108137

Product name

APEX1 antibody

IP: 1:500-1:5000

IHC: 1:20-1:200

Specificity

Human, Mouse, Rat; other species not tested.

IF: 1:10-1:100

Antibody description

APEX1 Rabbit Polyclonal antibody. Positive IF detected in MCF-7 cells. Positive IHC detected in human breast cancer tissue. Positive WB detected in HeLa cells, mouse brain tissue. Positive IP detected in HeLa cells. Observed molecular weight by Western-blot: 36 kDa

Preparation

This antibody was obtained by immunization of APEX1 recombinant protein (Accession Number: NM_001244249). Purification method: Antigen affinity purified.

Formulation

PBS with 0.1% sodium azide and 50% glycerol pH 7.3.

Storage

Store at -20°C. DO NOT ALIQUOT

Clonality

Polyclonal

Ig Type

Rabbit IgG

Applications

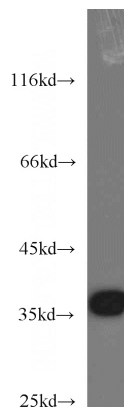
ELISA, WB, IHC, IF, IP

Dilutions

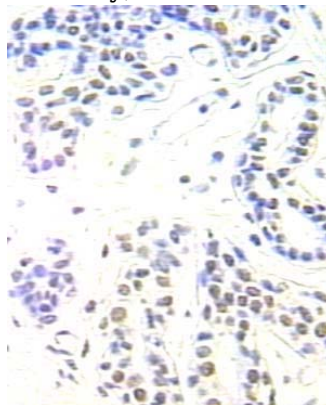
Recommended Dilution:

WB: 1:500-1:5000

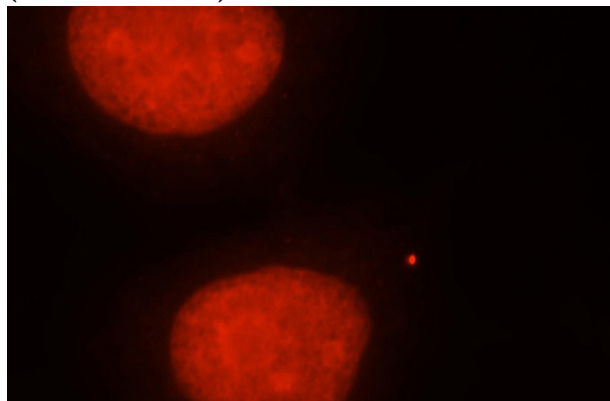
Validations



HeLa cells were subjected to SDS PAGE followed by western blot with Catalog No:108137(APEX1 antibody) at dilution of 1:1000



Immunohistochemical of paraffin-embedded human breast cancer using Catalog No:108137(APEX1 antibody) at dilution of 1:100 (under 25x lens)



APEX1 antibody

Catalog Number: 108137

Immunofluorescent analysis of MCF-7 cells, using APEX1 antibody Catalog No:108137 at 1:25 dilution and Rhodamine-labeled goat anti-rabbit

IP Result of anti-APEX1 (IP:Catalog No:108137, 4ug; Detection:Catalog No:108137 1:1000) with HeLa cells lysate 1600ug.

