

SIGLEC9 antibody



Catalog Number: 115227

Product name

SIGLEC9 antibody

Recommended Dilution:

WB: 1:500-1:5000

Immunogen

[Human SIGLEC9 Recombinant protein \(GST tag & His tag\)](#)

IHC: 1:20-1:200

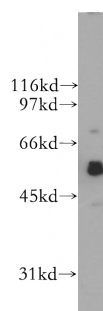
Validations

Specificity

Human, Mouse; other species not tested.

Antibody description

SIGLEC9 Rabbit Polyclonal antibody. Positive WB detected in A375 cells, mouse skeletal muscle tissue, U-937 cells. Positive IHC detected in human liver cancer tissue. Observed molecular weight by Western-blot: 55-60kd



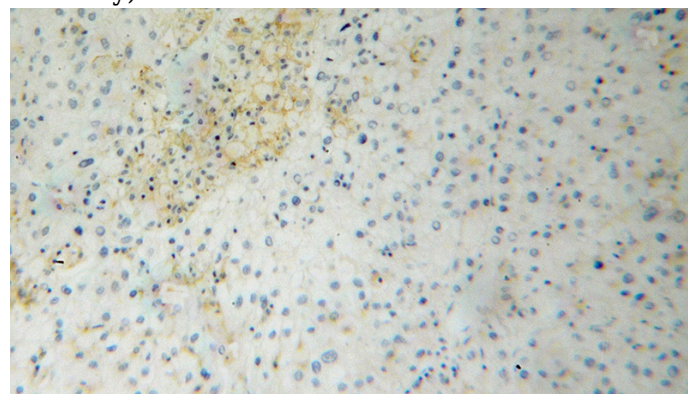
Preparation

This antibody was obtained by immunization of SIGLEC9 recombinant protein (Accession Number: NM_014441). Purification method: Antigen affinity purified.

A375 cells were subjected to SDS PAGE followed by western blot with Catalog No:115227(SIGLEC9 antibody) at dilution of 1:400

Formulation

PBS with 0.02% sodium azide and 50% glycerol pH 7.3.



Storage

Store at -20°C. DO NOT ALIQUOT

Clonality

Polyclonal

Ig Type

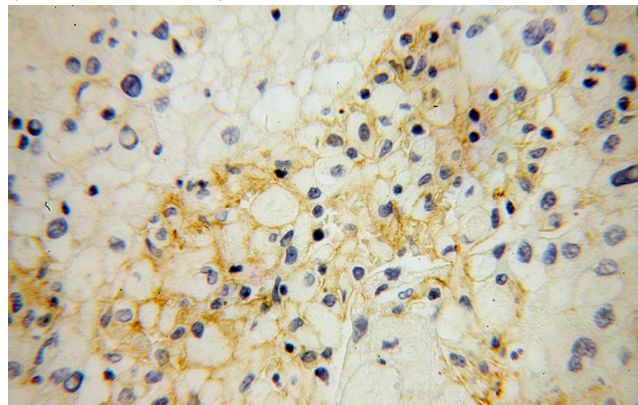
Rabbit IgG

Applications

ELISA, WB, IHC

Dilutions

Immunohistochemical of paraffin-embedded human liver cancer using Catalog No:115227(SIGLEC9 antibody) at dilution of 1:100 (under 10x lens)



SIGLEC9 antibody



Catalog Number: 115227

Immunohistochemical of paraffin-embedded
human liver cancer using Catalog

No:115227(SIGLEC9 antibody) at dilution of 1:100
(under 40x lens)