

General Information

Protein Construction

A DNA sequence encoding the canine FGF1 (XP_849274.1) (Phe16-Asp155) was expressed with a N-terminal Met.

Organism

Canine

Expression Host

E. coli

QC Testing

Activity

Measured in a cell proliferation assay using Balb/c 3T3 mouse embryonic fibroblasts. The ED₅₀ for this effect is typically 0.05-0.3 ng/ml.

Purity

> 90 % as determined by SDS-PAGE

Endotoxin

Please contact us for more information.

Stability

Samples are stable for up to twelve months from date of receipt at -70°C

Predicted N terminal

Met

Molecular Mass

The recombinant canine FGF1 comprises 141 amino acids and has a predicted molecular mass of 16 kDa. The apparent molecular mass of the protein is approximately 16 kDa in SDS-PAGE under reducing conditions.

Formulation

Lyophilized from sterile PBS, pH 7.4.

1. 5 % trehalose and mannitol are added as protectants before lyophilization.
2. Please contact us for any concerns or special requirements.

Usage Guide

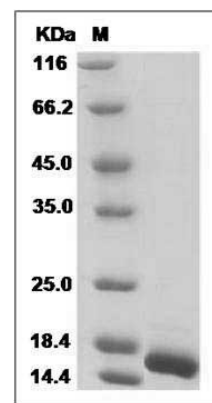
Storage

Store it under sterile conditions at -20°C to -80°C. It is recommended that the protein be aliquoted for optimal storage. Avoid repeated freeze-thaw cycles.

Reconstitution

Adding sterile water, prepare a stock solution of 0.25 mg/ml. Concentration is measured by UV-Vis.

SDS-PAGE



Canine aFGF / FGF1 Protein SDS-PAGE